



**INDONESIA
DEVELOPMENT
FORUM 2018**
INSPIRE • IMAGINE • INNOVATE • INITIATE



KNOWLEDGE
SECTOR INITIATIVE



Pathways to Tackle Regional Disparities Across the Archipelago





**INDONESIA
DEVELOPMENT
FORUM 2018**
INSPIRE • IMAGINE • INNOVATE • INITIATE



Adoption of digital technology in local communities: Field notes from Kasepuhan Ciptagelar

Gustaff H. Iskandar

Common Room (Members of Koalisi Seni Indonesia)



INDONESIA
DEVELOPMENT
FORUM 2018
INSPIRE · IMAGINE · INNOVATE · INITIATE



History & Facts About Kasepuhan Ciptagelar

- Officially established in 1368;
- Currently located at the core zone of Mount Halimun Salak National Park (TNGHS), West Java – Indonesia;
- The whole community consist more than 500 small villages with approximately 25.000 inhabitants;
- Distributed in 3 municipalities in West Java & Banten Province;
- Strongly adhere encesstral tradition that relies on farming, particularly rice culture & cultivation;
- Core stakeholders of ancient Sundanese indigenous community that known as “*Baris Pangawin*” or “*Pancer Pangawinan*”.



innovation **factory**/ICT4AG Indonesia

A space for innovative thinking and promoting digital ideas. This initiative was established by the end of 2015 & supported by The Deutsche Gesellschaft für Internationale Zusammenarbeit GmbH (GIZ). innovation **factory**/ICT4AG Indonesia was being developed by Common Room in close collaboration with Kasepuhan Ciptagelar community.





INDONESIA
DEVELOPMENT
FORUM 2018
INSPIRE · IMAGINE · INNOVATE · INITIATE



innovation factory

realizing shared solutions

Meeting

Meeting

Meeting

Meeting

Meeting

Meeting

Meeting

Meeting

Meeting

Meeting

Meeting

Meeting

Meeting

Meeting

Meeting

Meeting

Meeting

Meeting

Meeting

Meeting

Meeting

Meeting

Meeting

Meeting

Meeting

Meeting

Meeting

Meeting

Meeting

Meeting

Meeting

Meeting

Meeting

Meeting

Meeting

Meeting

Meeting

Meeting

Meeting

Meeting

Meeting

Meeting

Meeting

Meeting

Meeting

Meeting

Meeting

Meeting

Meeting

Meeting

Meeting

Meeting

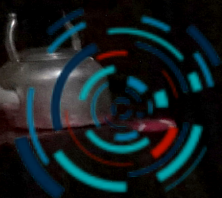


Multistakeholder Meeting

Gambung, 4-6 April 2016

Gambung Recommendations

- Environmental protection & conservation;
- Cultural preservation & development;
- Local ICT infrastructure & renewable energy development;
- Local economic empowerment & livelihood improvement.



INDONESIA
DEVELOPMENT
FORUM 2018
INSPIRE · IMAGINE · INNOVATE · INITIATE



**Strategic Implementation:
Bridging indigenous & scientific knowledge**



INDONESIA
DEVELOPMENT
FORUM 2018

INSPIRE · IMAGINE · INNOVATE · INITIATE



**Prototyping & Experimentation:
Local ICT Infrastructure Development**



INDONESIA
DEVELOPMENT
FORUM 2018
INSPIRE • IMAGINE • INNOVATE • INITIATE

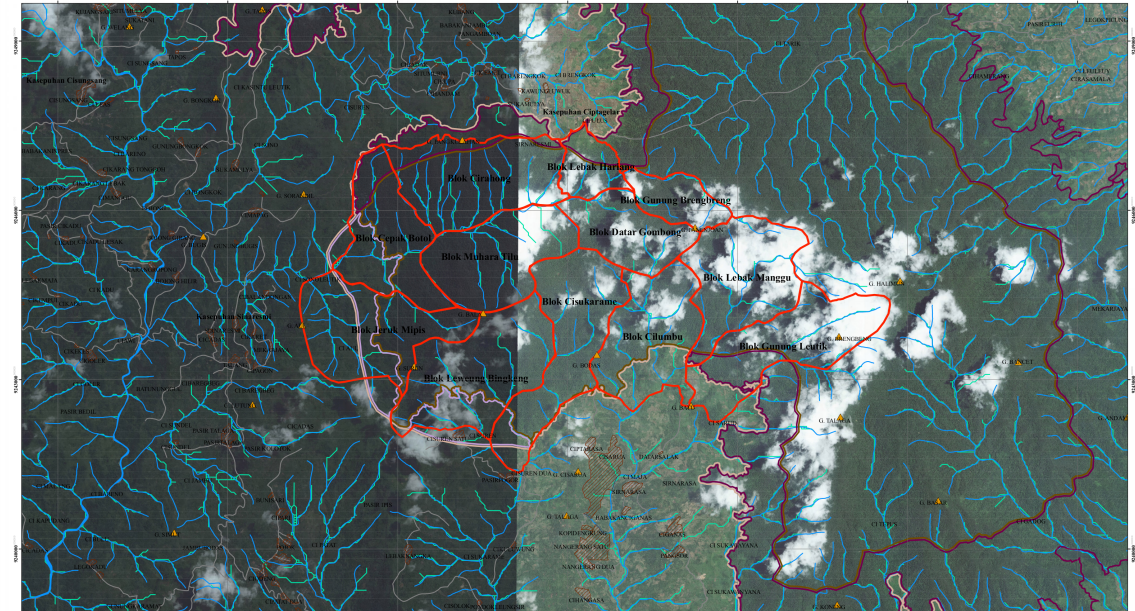
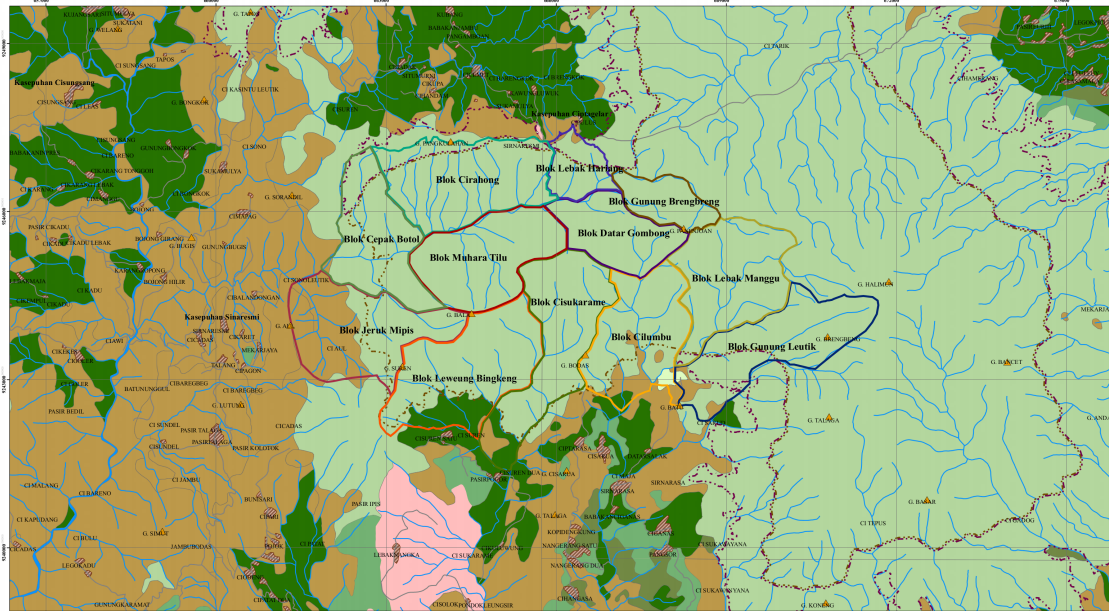


**Prototyping & Experimentation:
Renewable Energy Resources**

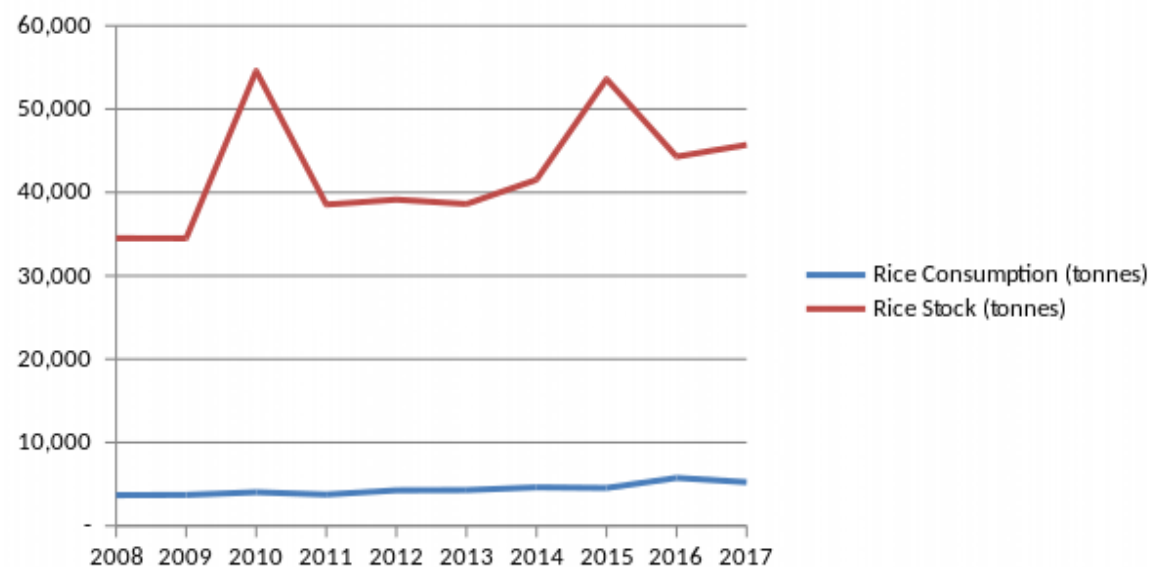
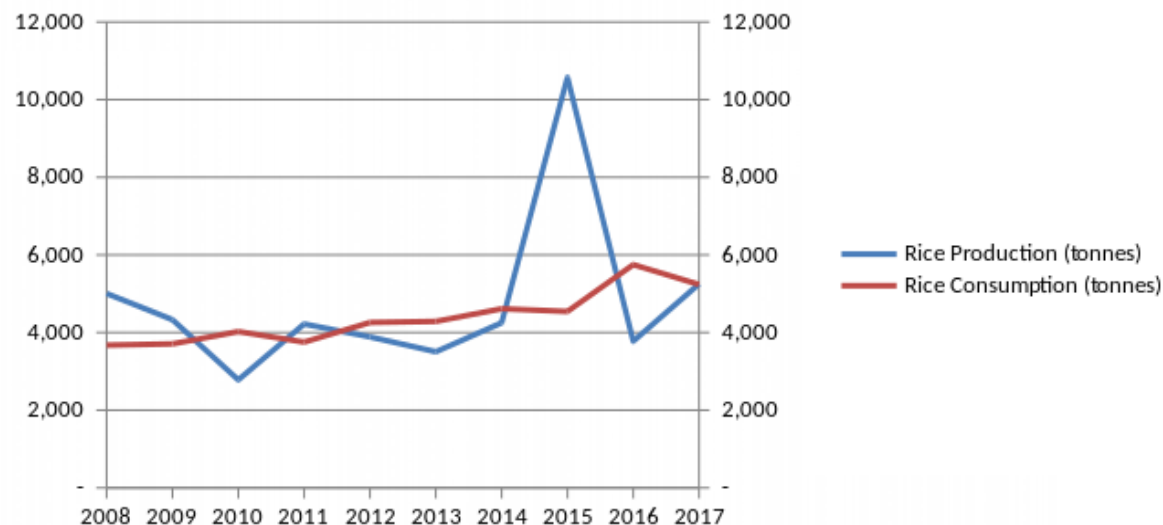




INDONESIA
DEVELOPMENT
FORUM 2018
INSPIRE · IMAGINE · INNOVATE · INITIATE



Cultural Space Mapping in Kasepuhan Ciptagelar innovation **factory**/ICT4AG Indonesia Project Report 2017





INDONESIA
DEVELOPMENT
FORUM 2018

INSPIRE • IMAGINE • INNOVATE • INCLUDE



The adoption of digital technology among indigenous peoples of Kasepuhan Ciptagelar has been able to improved access to communication and social inclusion, in addition to increasing access to information and knowledge, both among local communities and societies in a broader context. This needs to be continuously developed in order to improve the resilience and ability of citizens in anticipating future challenges and complexities.



**INDONESIA
DEVELOPMENT
FORUM 2018**
INSPIRE • IMAGINE • INNOVATE • INITIATE



Digital economy will be determined by the ability of common citizens to generate & distribute data, as well to nurture symbolic exchanges and interactions that are based on the utilization of information & knowledge.





INDONESIA
DEVELOPMENT
FORUM 2018
INSPIRE · IMAGINE · INNOVATE · INITIATE



Notes & Recommendations

- Tackling regional disparities is a long run process & require collaborative effort;
- Invest in human, culture & environment, as well mutual knowledge exchange & skill building;
- Cultural approach is very important to nurture empathy & sharpen intuition;
- Digital technology adoption has to strongly embedded with local context & local needs.



INDONESIA
DEVELOPMENT
FORUM 2018
INSPIRE • IMAGINE • INNOVATE • INITIATE



Thank you. Terimakasih. Hatur nuhun.

