

TECH FOR DROUGHT RESILIENCE

DIASTIKA RAHWIDIATI

Deputy Head of Office, Pulse Lab Jakarta

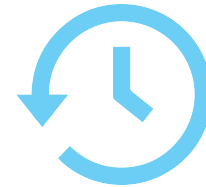
We already have a wealth of data...



SUSENAS



Rainfall



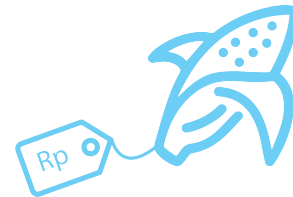
Disaster history



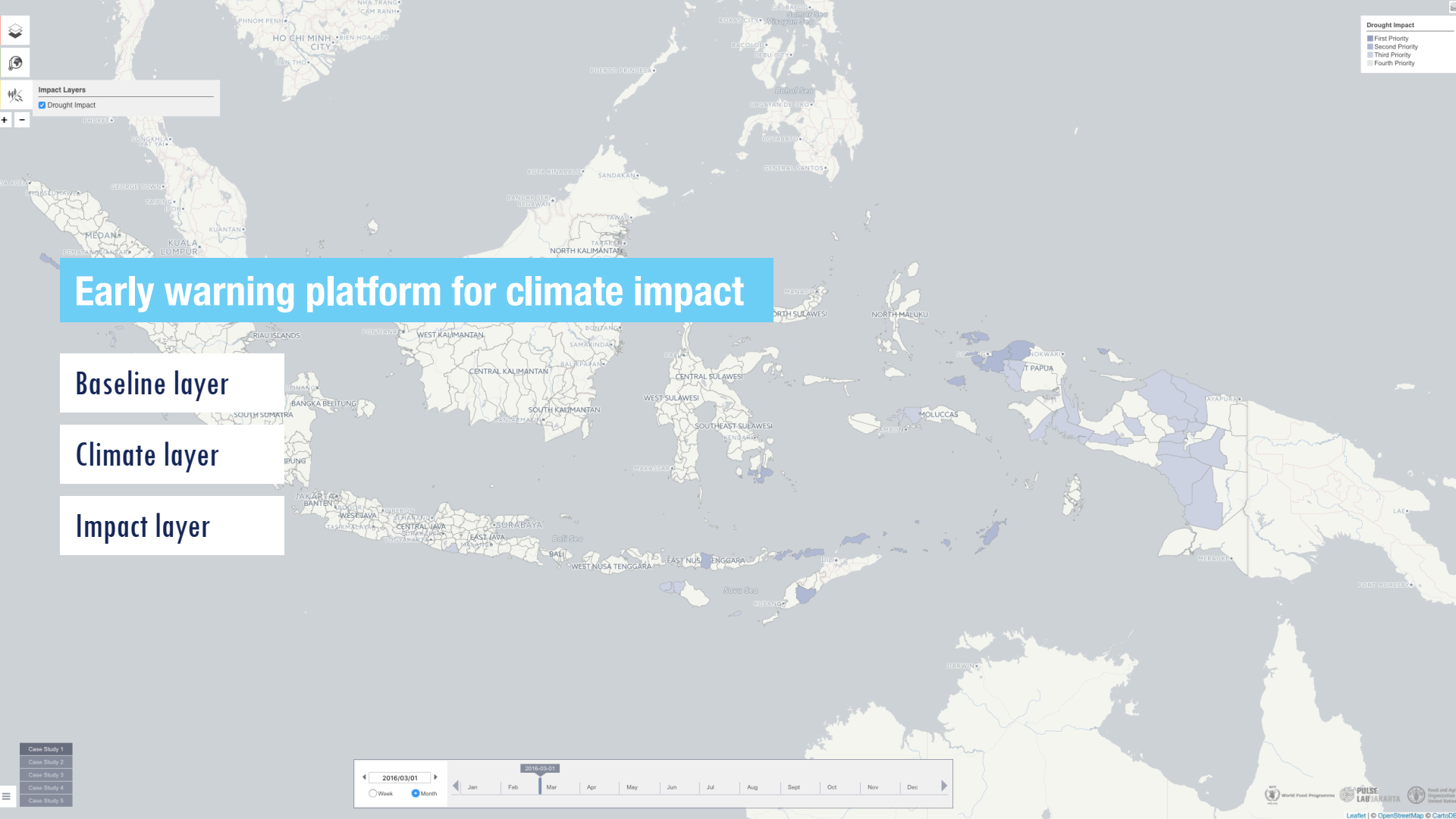
WFP household survey
on food insecurity



Vegetation Health Index



Commodity prices



Drought impact
■ First Priority
■ Second Priority
■ Third Priority
■ Fourth Priority

Impact Layers
 Drought Impact

Early warning platform for climate impact

Baseline layer

Climate layer

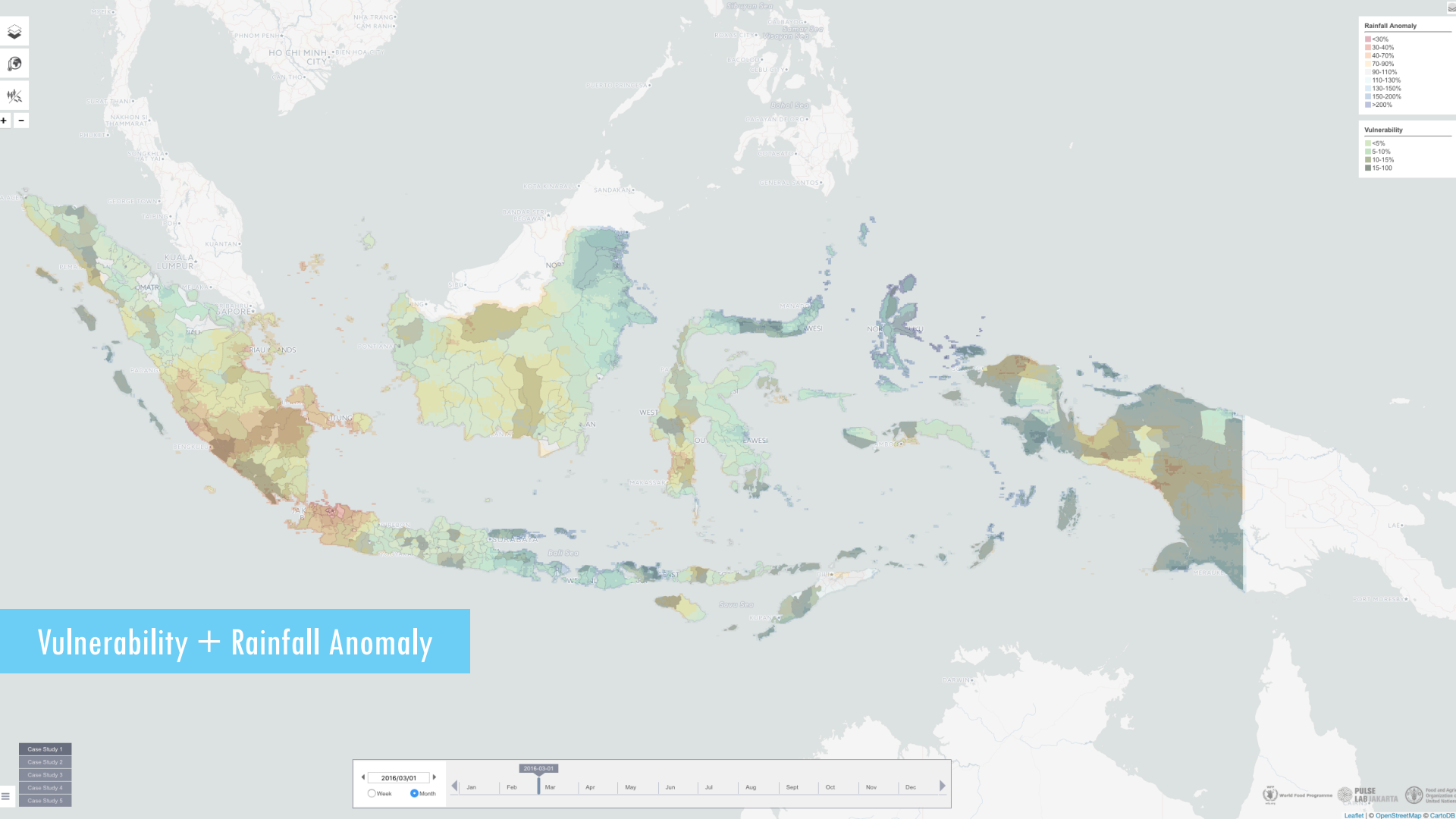
Impact layer

- Case Study 1
- Case Study 2
- Case Study 3
- Case Study 4
- Case Study 5

2016-03-01 | 2016-03-01

◀ Week ▶ | ◯ Week ● Month

◀ Jan Feb Mar Apr May Jun Jul Aug Sept Oct Nov Dec ▶



Rainfall Anomaly

- <-30%
- 30-40%
- 40-70%
- 70-90%
- 90-110%
- 110-130%
- 130-150%
- 150-200%
- >200%

Vulnerability

- <5%
- 5-10%
- 10-15%
- 15-100

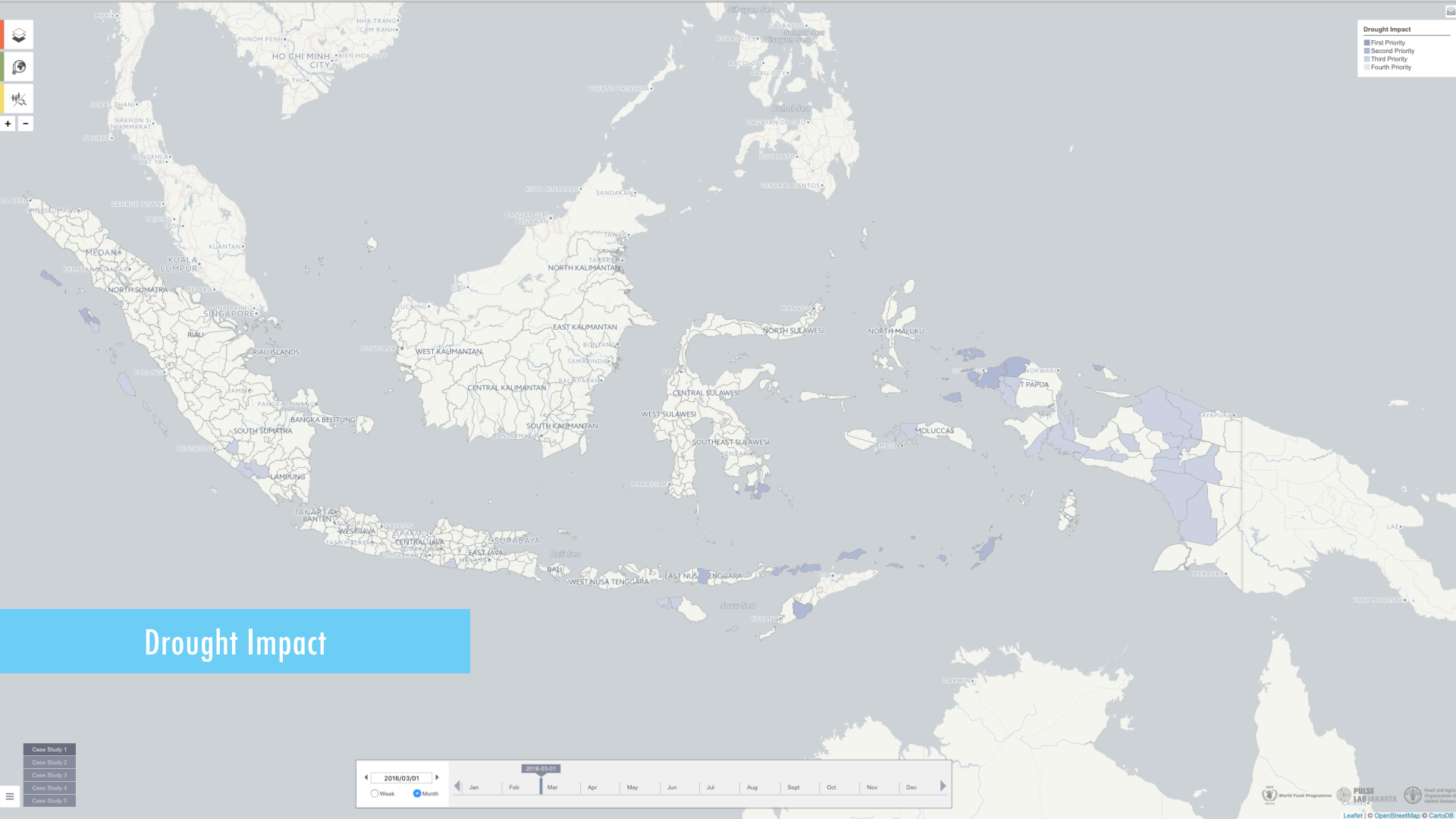
Vulnerability + Rainfall Anomaly

- Case Study 1
- Case Study 2
- Case Study 3
- Case Study 4
- Case Study 5

2016-03-01 | 2016-03-01

◀ Week Month ▶

◀ Jan Feb Mar Apr May Jun Jul Aug Sept Oct Nov Dec ▶



Drought Impact

- First Priority
- Second Priority
- Third Priority
- Fourth Priority

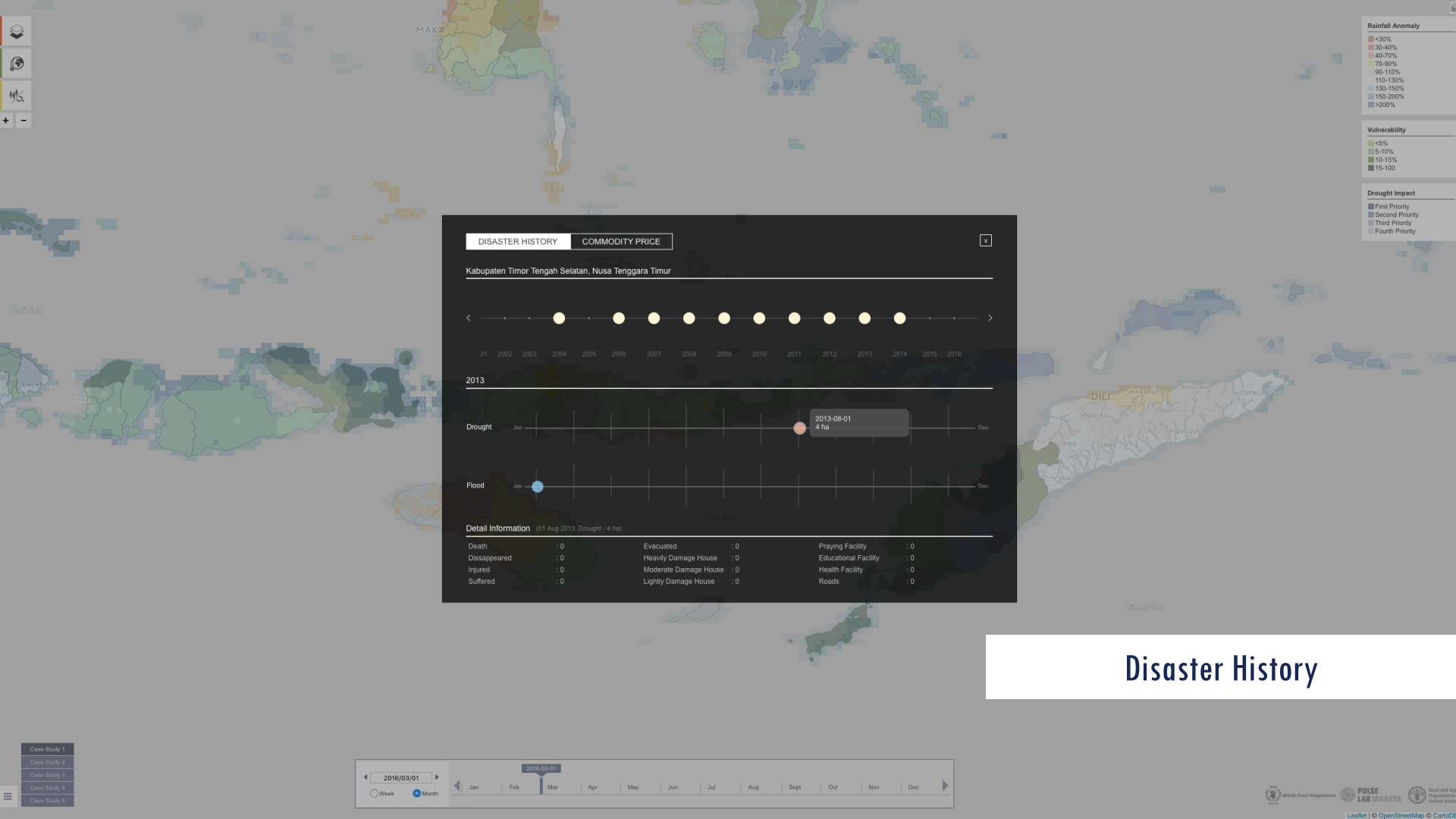
Map navigation controls: Home, Full Screen, Layers, Zoom In (+), Zoom Out (-).

Drought Impact

- Case Study 1
- Case Study 2
- Case Study 3
- Case Study 4
- Case Study 5

Timeline navigation: 2016-03-01 | 2016-03-01

Week
 Month



Rainfall Anomaly

- <30%
- 30-40%
- 40-70%
- 70-80%
- 80-110%
- 110-130%
- 130-150%
- 150-200%
- >200%

Vulnerability

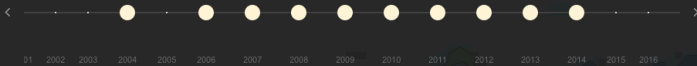
- <5%
- 5-10%
- 10-15%
- 15-100

Drought Impact

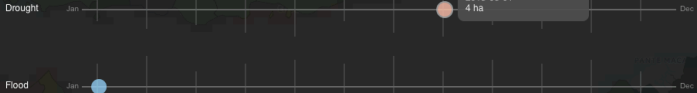
- First Priority
- Second Priority
- Third Priority
- Fourth Priority

DISASTER HISTORY COMMODITY PRICE

Kabupaten Timor Tengah Selatan, Nusa Tenggara Timur



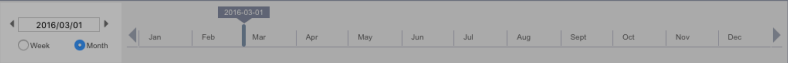
2013



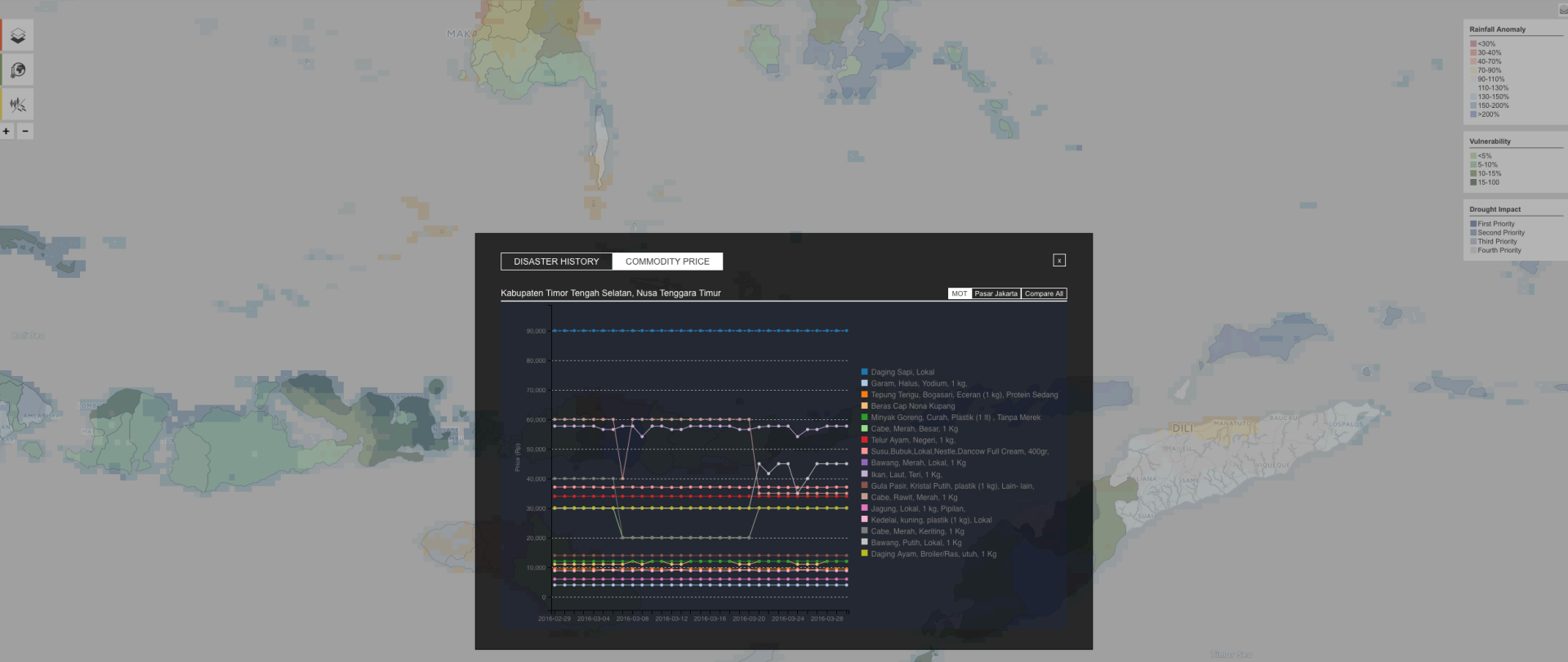
Detail Information (01 Aug 2013, Drought - 4 ha)

Death	: 0	Evacuated	: 0	Praying Facility	: 0
Disappeared	: 0	Heavily Damage House	: 0	Educational Facility	: 0
Injured	: 0	Moderate Damage House	: 0	Health Facility	: 0
Suffered	: 0	Lightly Damage House	: 0	Roads	: 0

- Case Study 1
- Case Study 2
- Case Study 3
- Case Study 4
- Case Study 5

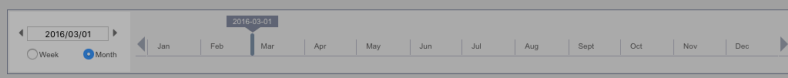


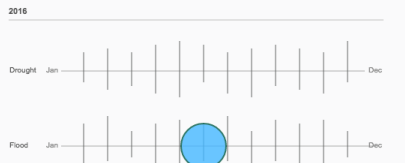
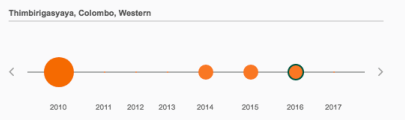
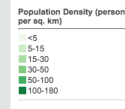
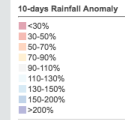
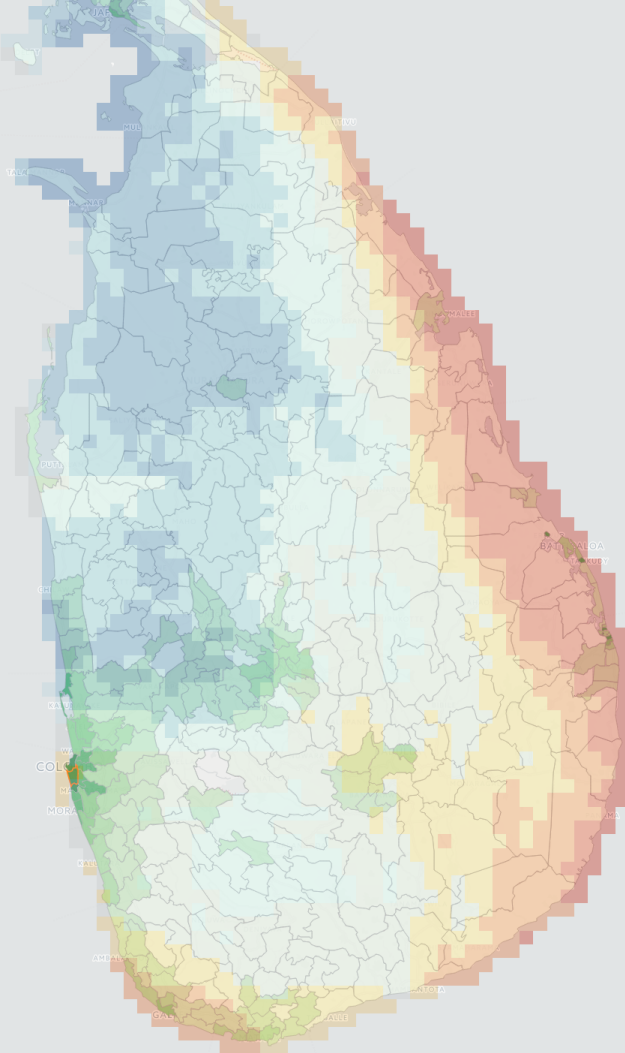
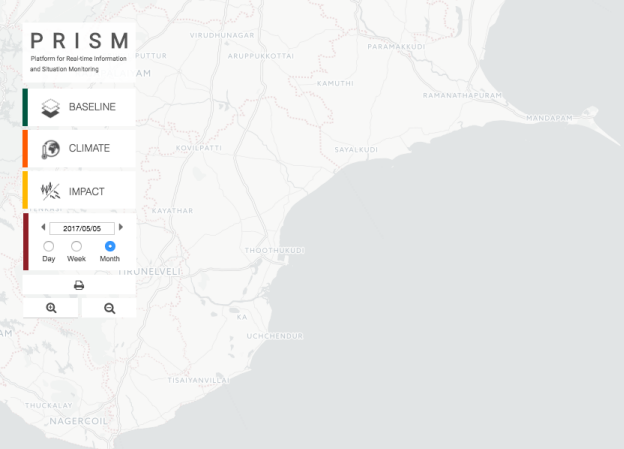
Disaster History



Tracking Commodity Prices

- Case Study 1
- Case Study 2
- Case Study 3
- Case Study 4
- Case Study 5





Detail Information (15 May 2016, Flood - 15178 people affected)

Death	: 0	Evacuated	: 0	Praying Facility	: 0
Disappeared	: 0	Heavily Damaged House	: 0	Educational Facility	: 0
Injured	: 0	Moderately Damaged House	: 0	Health Facility	: 0
Suffered	: 15178	Lightly Damaged House	: 1	Crop Damages (ha)	: 0

Usage + Adaptation



Harnessing data for development
Translating insights for social innovation

 plj@un.or.id

 [@PulseLabJakarta](https://twitter.com/PulseLabJakarta)

 [@PulseLabJakarta](https://www.instagram.com/PulseLabJakarta)

 [@PulseLabJakarta](https://www.facebook.com/PulseLabJakarta)

 pulselabjakarta.id