



INDONESIA DEVELOPMENT FORUM

INSPIRE • IMAGINE • INNOVATE



KNOWLEDGE
SECTOR INITIATIVE



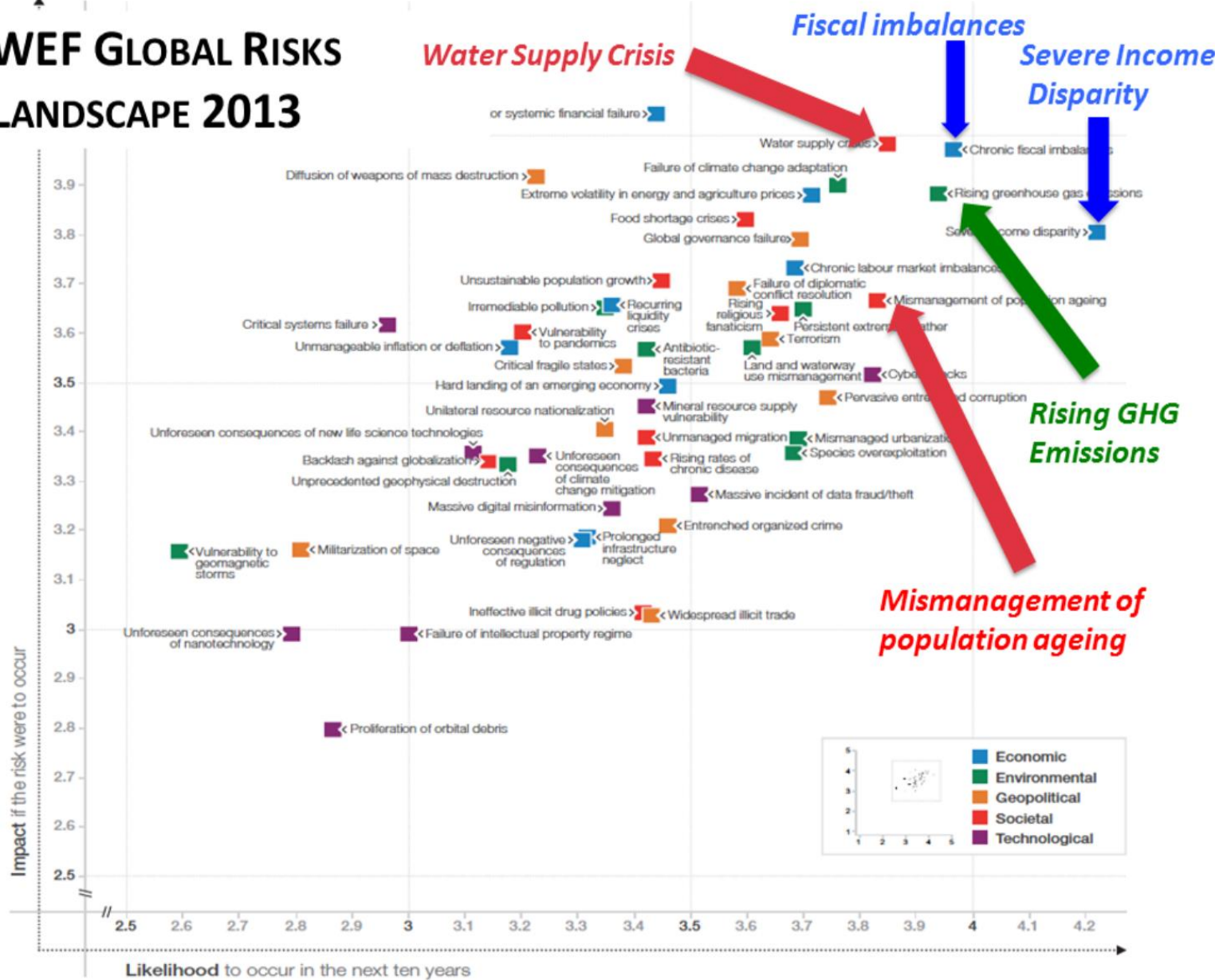
Indonesia Development Forum 2017

Fighting Inequality for Better Growth

Jakarta, 9-10 August 2017



WEF GLOBAL RISKS LANDSCAPE 2013

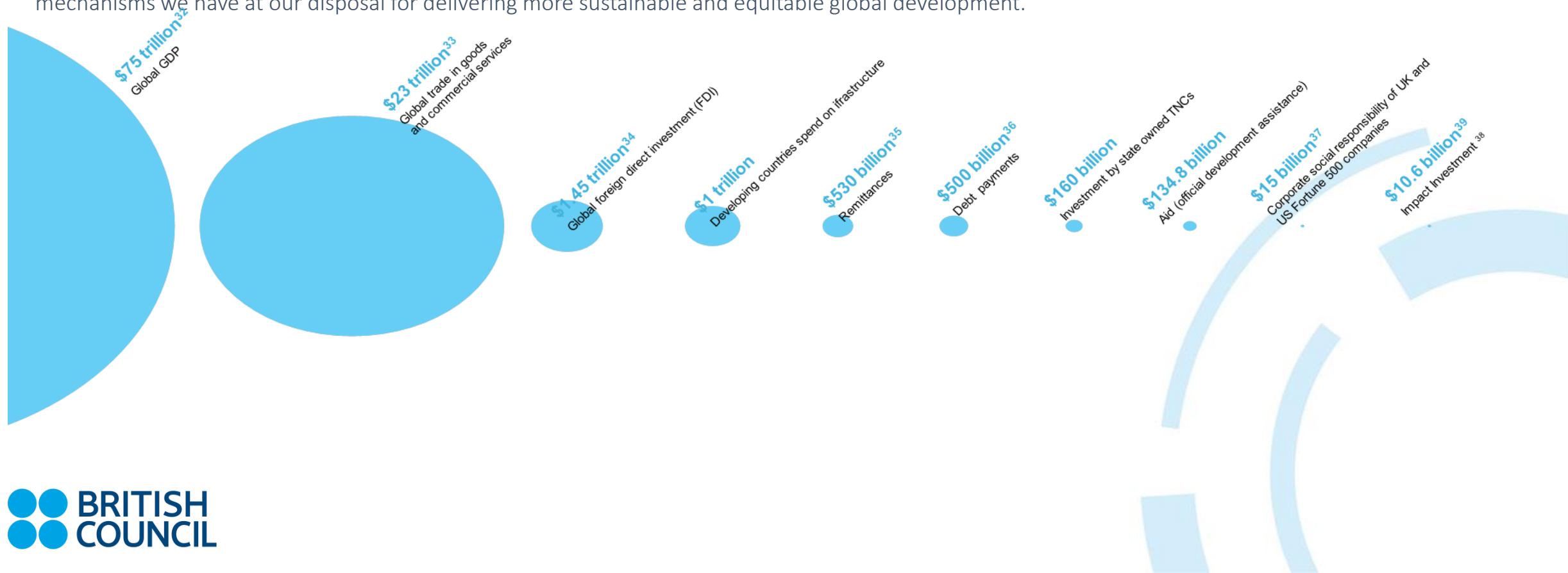


Social Entrepreneurship – An agenda that cuts across the political spectrum



Think global, trade social

The relative scale of global trade investment, remittances, aid, debt, CSR activity and impact investment sheds some light on the means and mechanisms we have at our disposal for delivering more sustainable and equitable global development.



A snapshot of policy and legislative development in Asia

India: 2% CSR Law and social entrepreneurship referenced in the Enterprise Law

The Philippines: The PRESENT bill (pending)

Pakistan: The launch of the Centre for Social Entrepreneurship

Hong Kong: The Social Innovation and Entrepreneurship Fund launched in 2013

Viet Nam: Revision to the Enterprise Law (article 10)

Korea: The Social Enterprise Promotion Act passed in 2009

Myanmar: Social Entrepreneurship chapter in the governments draft Entrepreneurship strategy

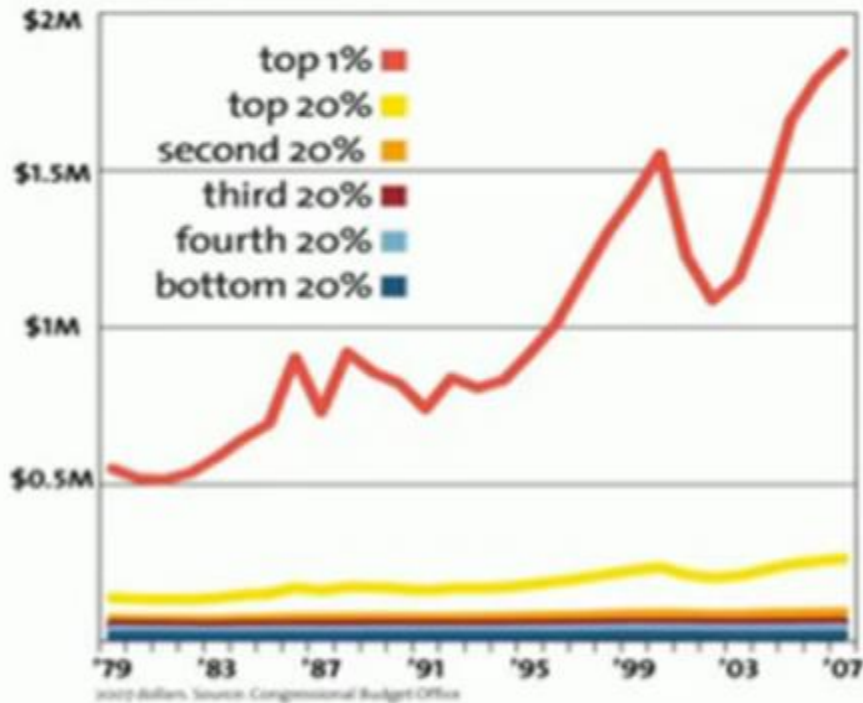
Malaysia: The launch of the Social Outcome Fund (2017)

Thailand: Social Enterprise Promotion Act (pending)

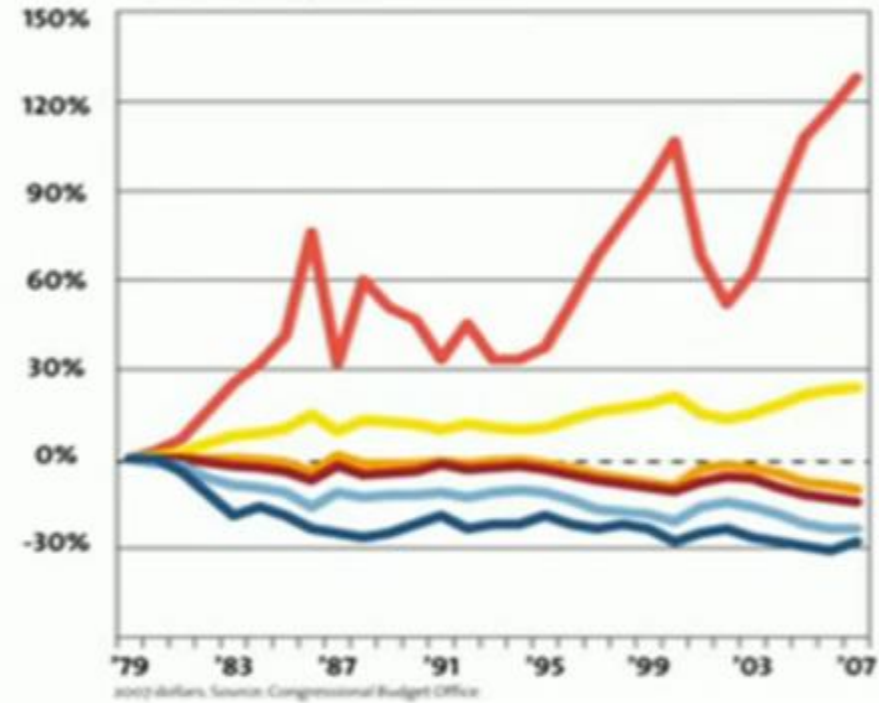
Indonesia: Developing a Social Enterprise Bill and announced UNDP partnership to unlock social finance towards achieving SDGs

The superrich have grabbed the bulk of the past three decades' gains.

AVERAGE HOUSEHOLD INCOME
before taxes



CHANGE IN SHARE OF INCOME
Vs. 1979, after taxes



IMPACT INVESTMENT: THE INVISIBLE HEART OF MARKETS

Harnessing the power of entrepreneurship,
innovation and capital for public good

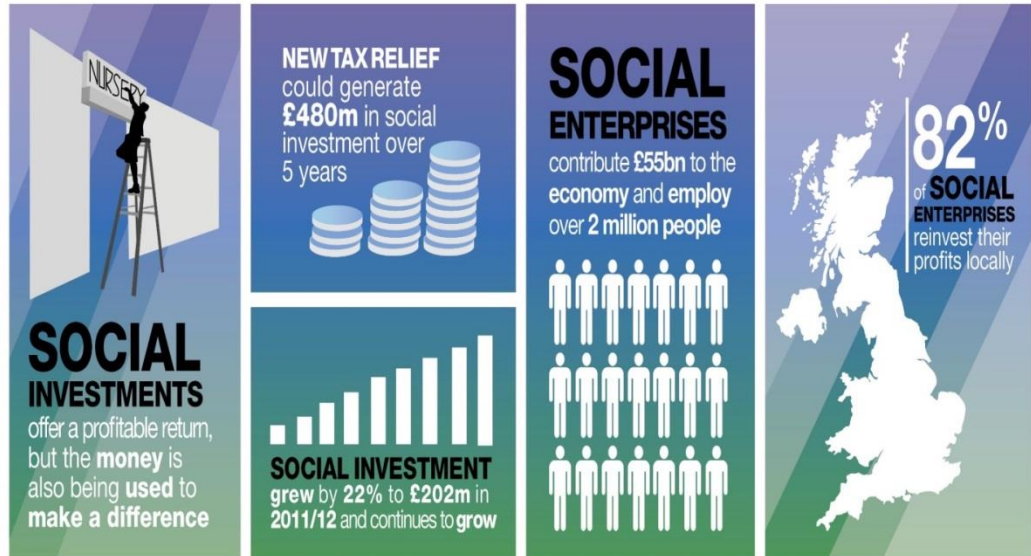
We are a country built on the bonds of family, community and citizenship and there is no greater example of the strength of those bonds than our great movement of charities and social enterprises. [...]

'We will continue to lead the way internationally in the development of social finance to harness the full potential of our charities and social enterprises in working with business and government to tackle some of the biggest social challenges in our country.'

*Prime Minister,
Theresa May*



NEW 30% TAX RELIEF FOR SOCIAL INVESTORS



“Democracies flourish when large numbers of citizens acquire the capacity to shape civic life. Social entrepreneurship is a process by which citizens organize to do just that”



THANK YOU