



INDONESIA
DEVELOPMENT
FORUM

INSPIRE • IMAGINE • INNOVATE



KNOWLEDGE
SECTOR INITIATIVE



Indonesia Development Forum 2017

Fighting Inequality for Better Growth

Jakarta, 9-10 August 2017



INDONESIA
DEVELOPMENT
FORUM

INSPIRE • IMAGINE • INNOVATE



KNOWLEDGE
SECTOR INITIATIVE



Low-Carbon Economy Region of Eastern Indonesia's Green Growth

Low-Carbon Economy Region of Eastern Indonesia's Green Growth



Angreine Kewo
Denmark Technical University

Co-authors:
Pinrolinvic Manembu (Unsrat) & Per Sierverts Nielsen (DTU)

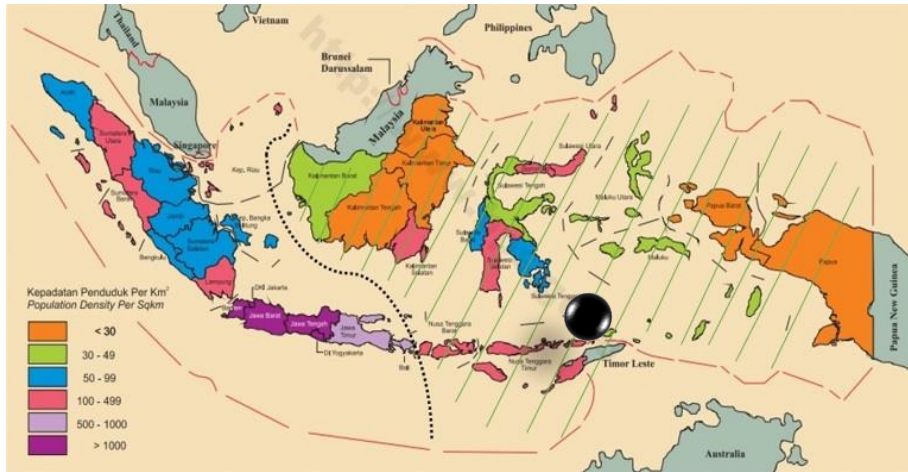
Jakarta, 09 August 2017

Agenda

- Eastern Indonesia (KTI)'s profile
- Green Growth
- Low-Carbon Economy
- Quintuple Helix approach
- Methodology
- Impacts

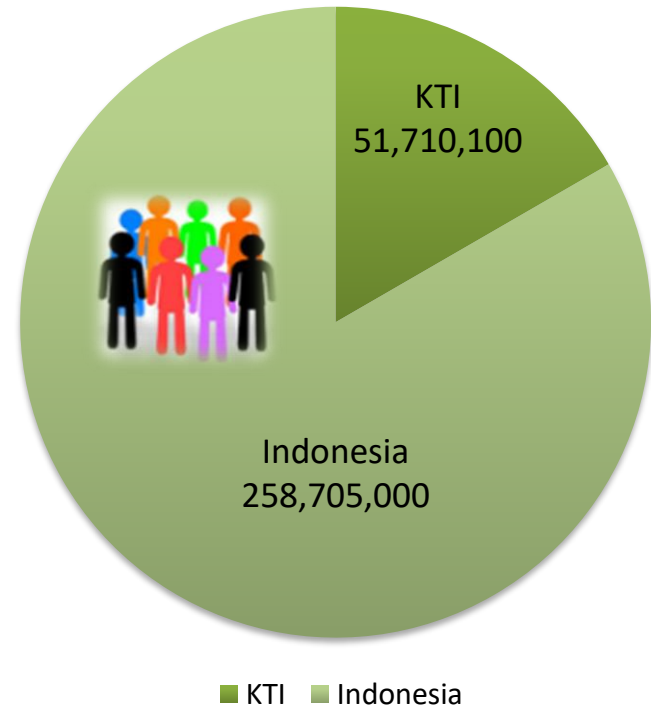


KTI's Profile



- 17 provinces
- Rural, semi-rural and few cities are in transition to modern city
- 1 city in KTI is a Low-Carbon town model in Indonesia

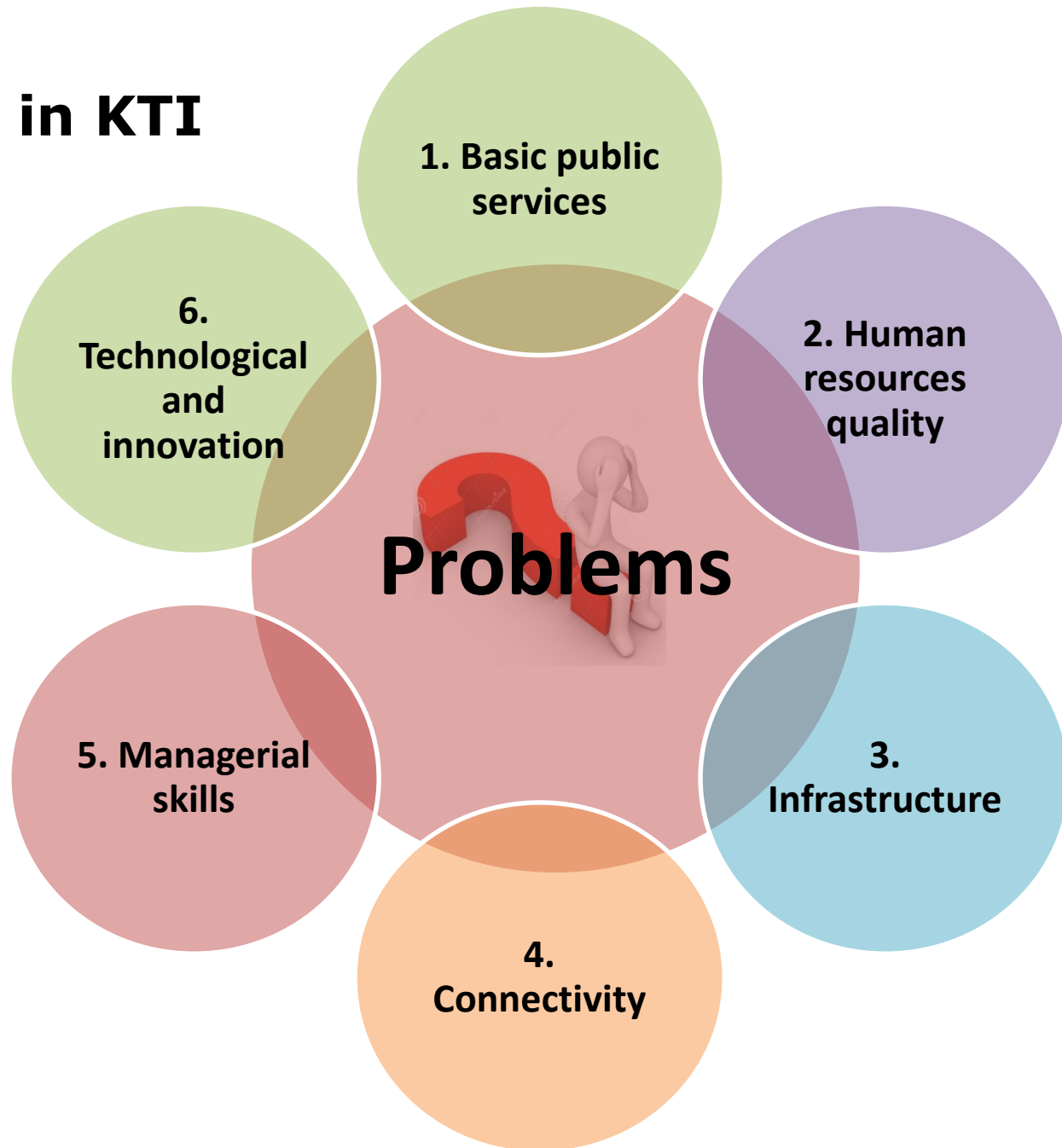
Population



KTI's key potentials



Issues in KTI



1. Basic public services

2. Human resources quality

3. Infrastructure

4. Connectivity

5. Managerial skills

6. Technological and innovation

Problems



Green Growth



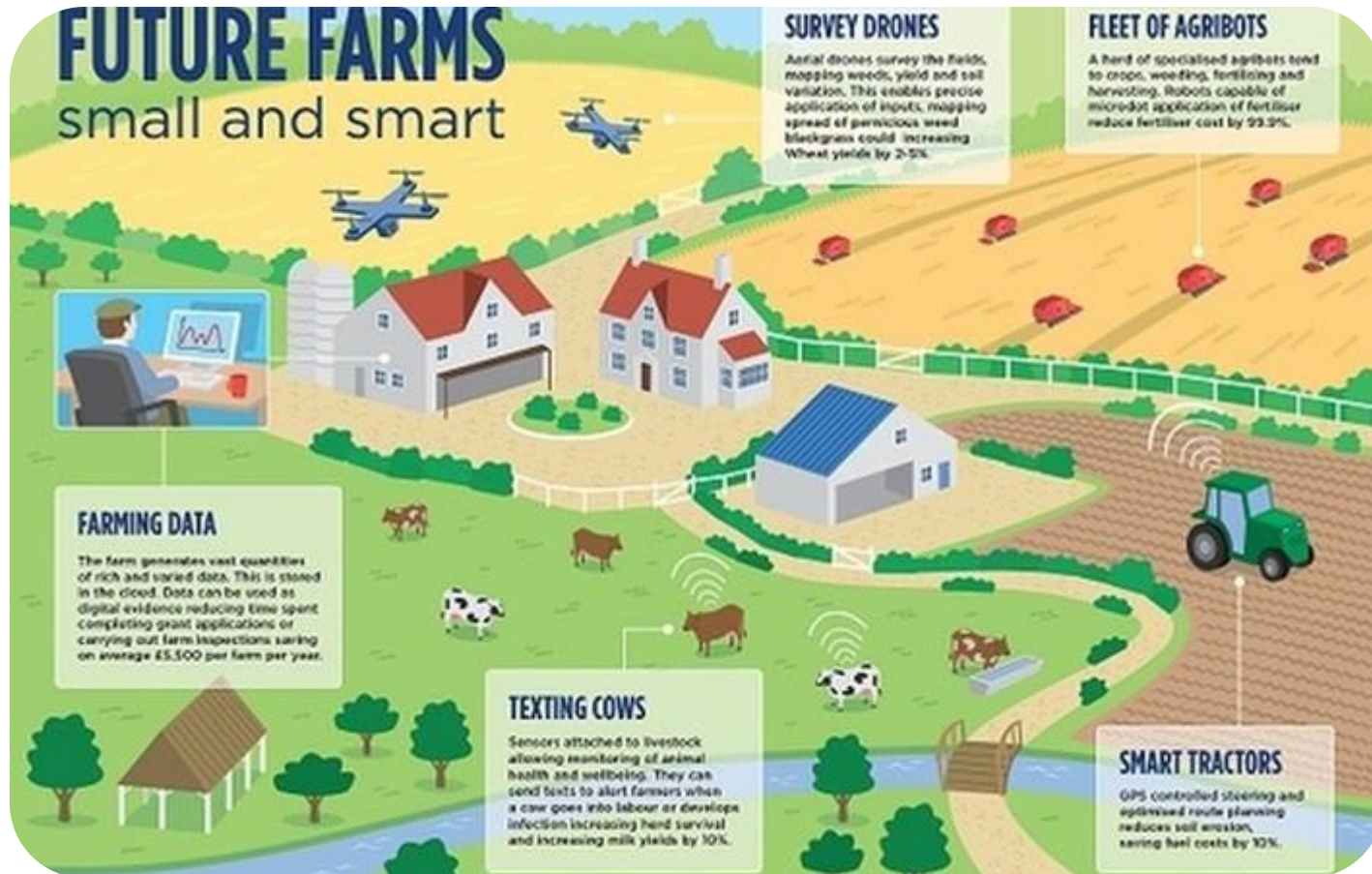


Low-Carbon Economy Region



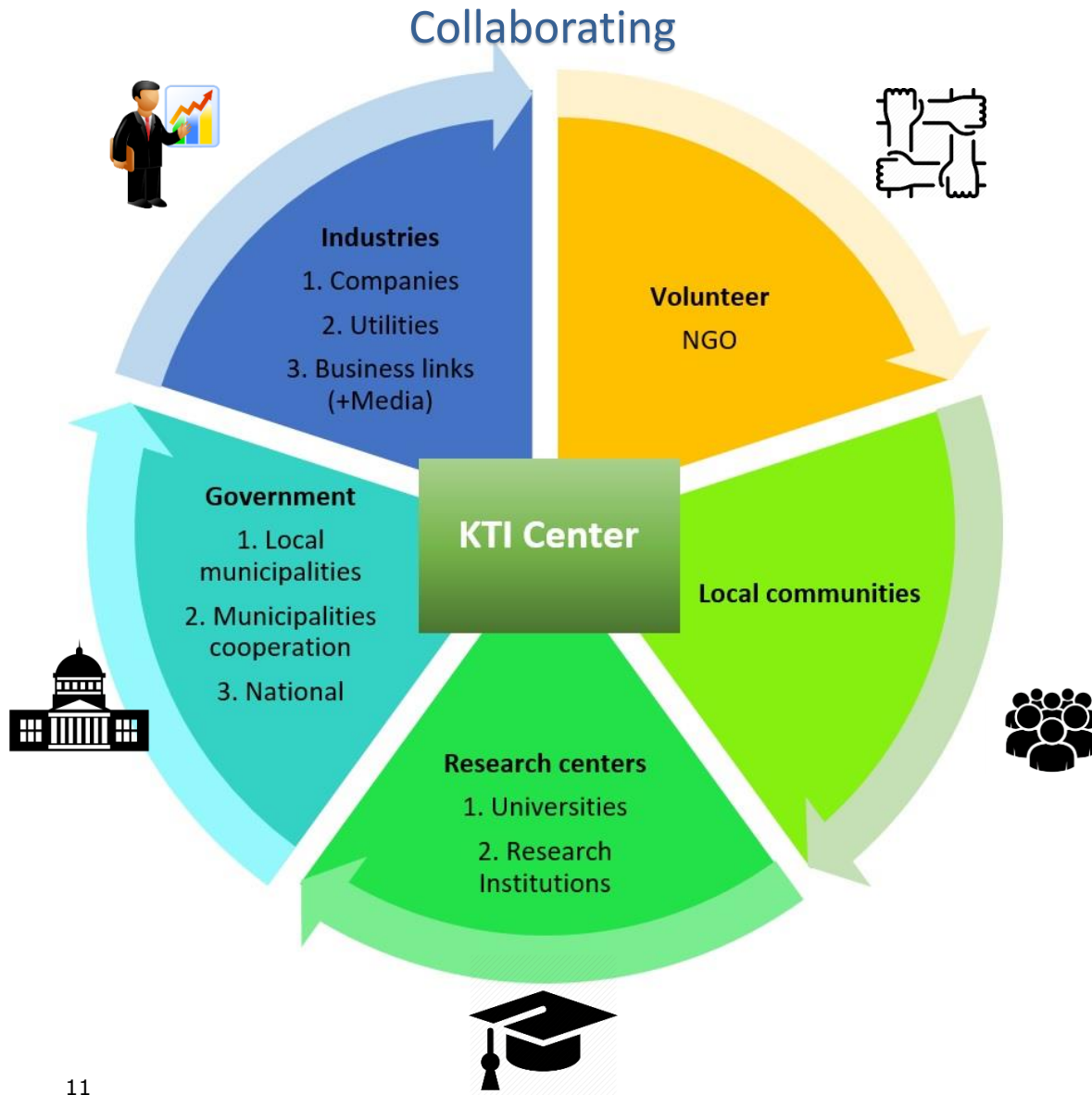
Copenhagen, Denmark

Low-carbon economy example



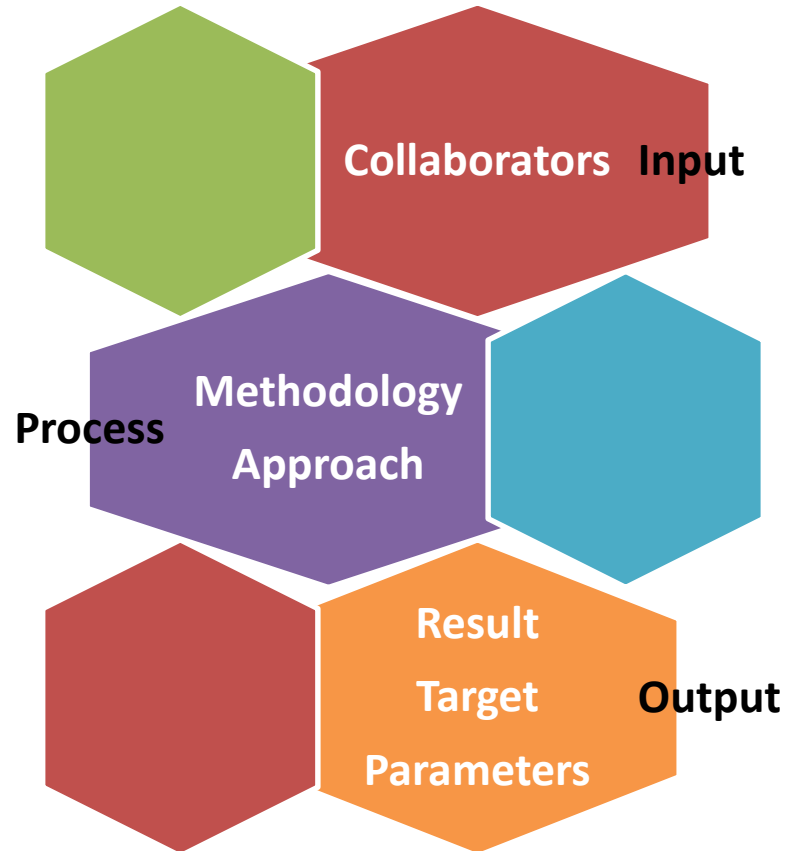
Smart green village concept from India

Quintuple helix approach



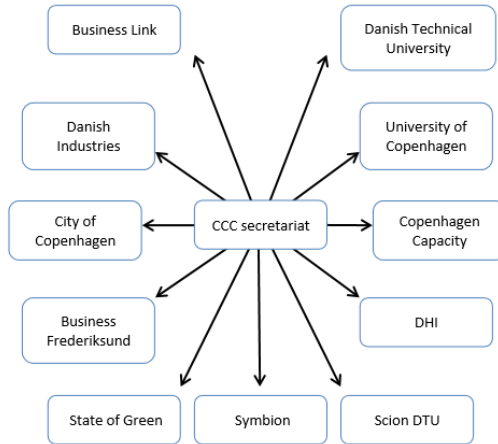
- ✔ Commitment
- ✔ Full involvement
- ✔ Learning
- ✔ Empowerment
- ✔ Professionalism
- ✔ Sense of belonging

Quintuple helix project's methodology



Green Growth – Quintuple project

Copenhagen Cleantech Cluster



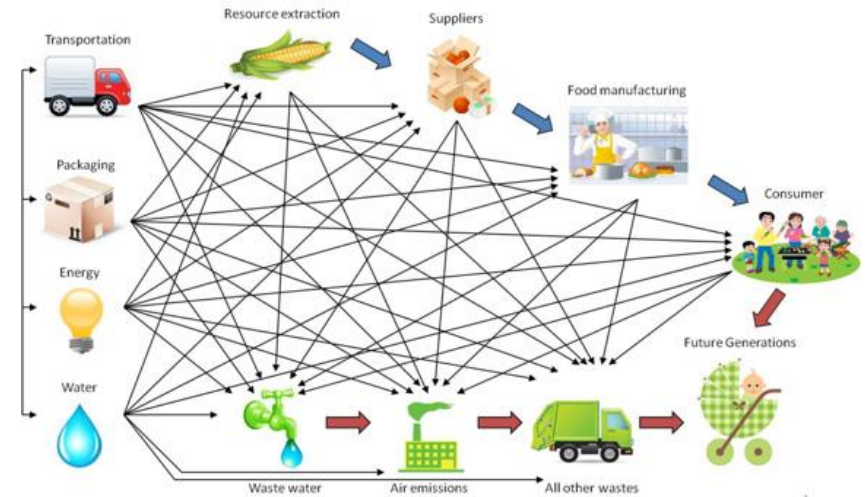
CLEAN 3.0

Smart Energy 2 Market

FURGY CLEAN Innovation

Innovative plastic sorting and reprocessing solution

Example from Denmark: Copcap project



An example idea (personal) of sustainable value chain e.g NTT corn industry

Successful Low-Carbon parameters



34 % Basic to higher education include PhD of 30-69 yo

22,425 Highly educated foreigners

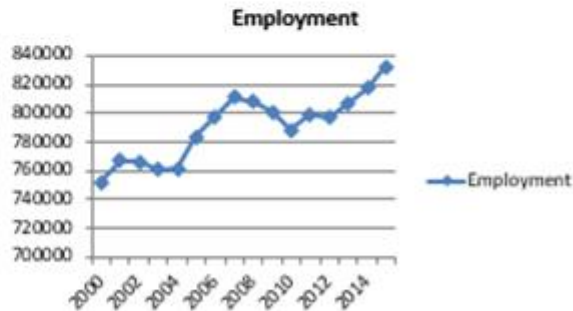
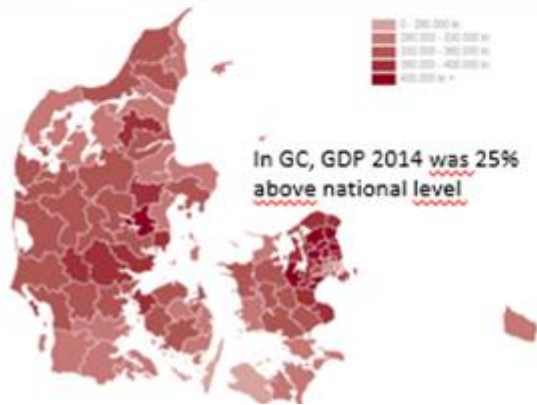
Statistics Denmark, 1 Jan 2015

40 % Denmark's GDP

85 % FDI

75 % New job in the past decade

- Homebased of +50% Danish export
- Largest recipient of R&D investments



Employment in GC plus Bornholm



Co-financed by the European Regional Development Fund



Greater Copenhagen Low-carbon Economy



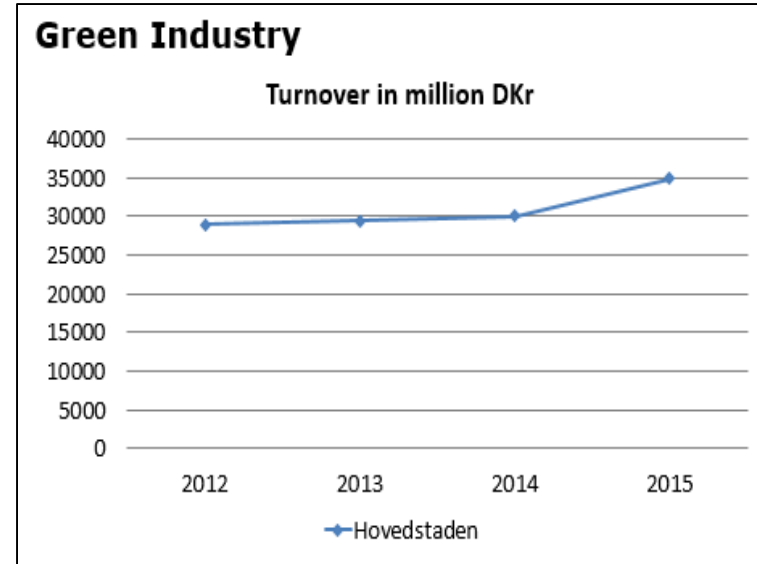
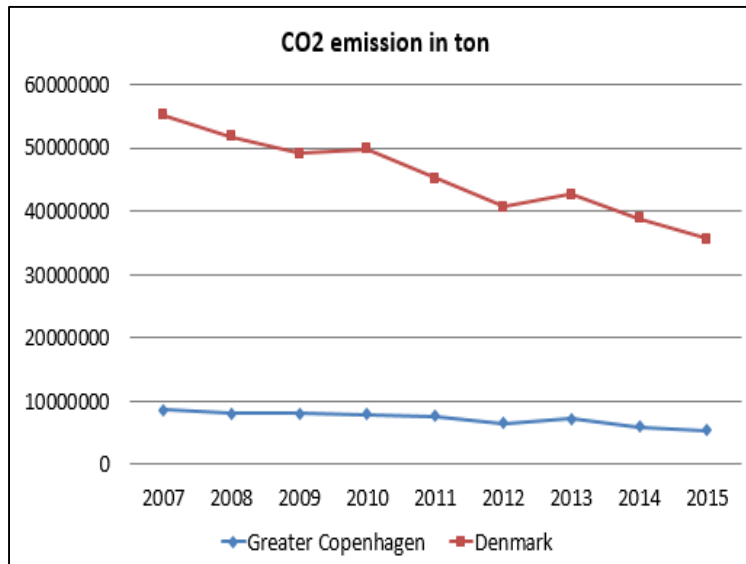
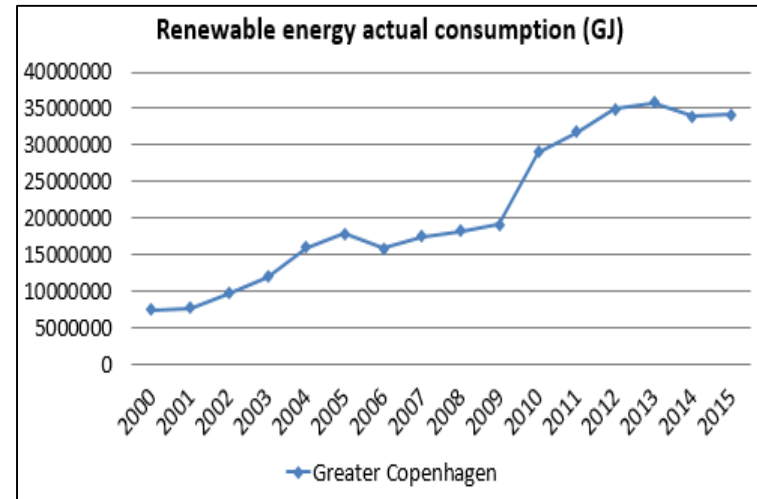
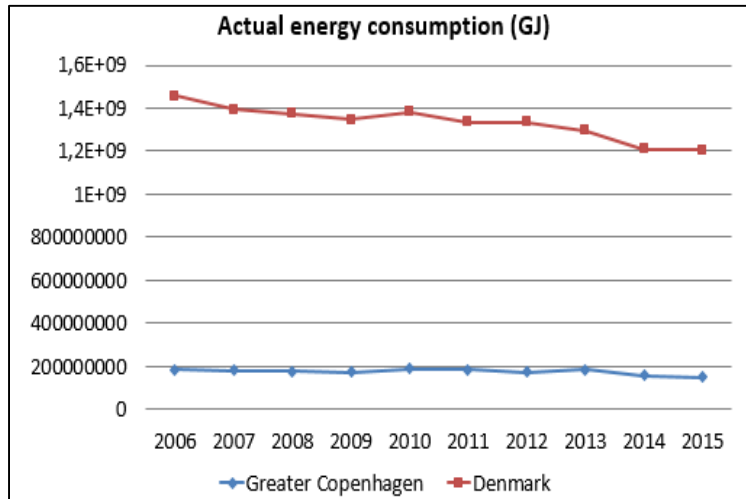
Per Sieverts Nielsen
Angreine Kewo

DTU
Denmark Technical University

Vienna, 29 March 2017

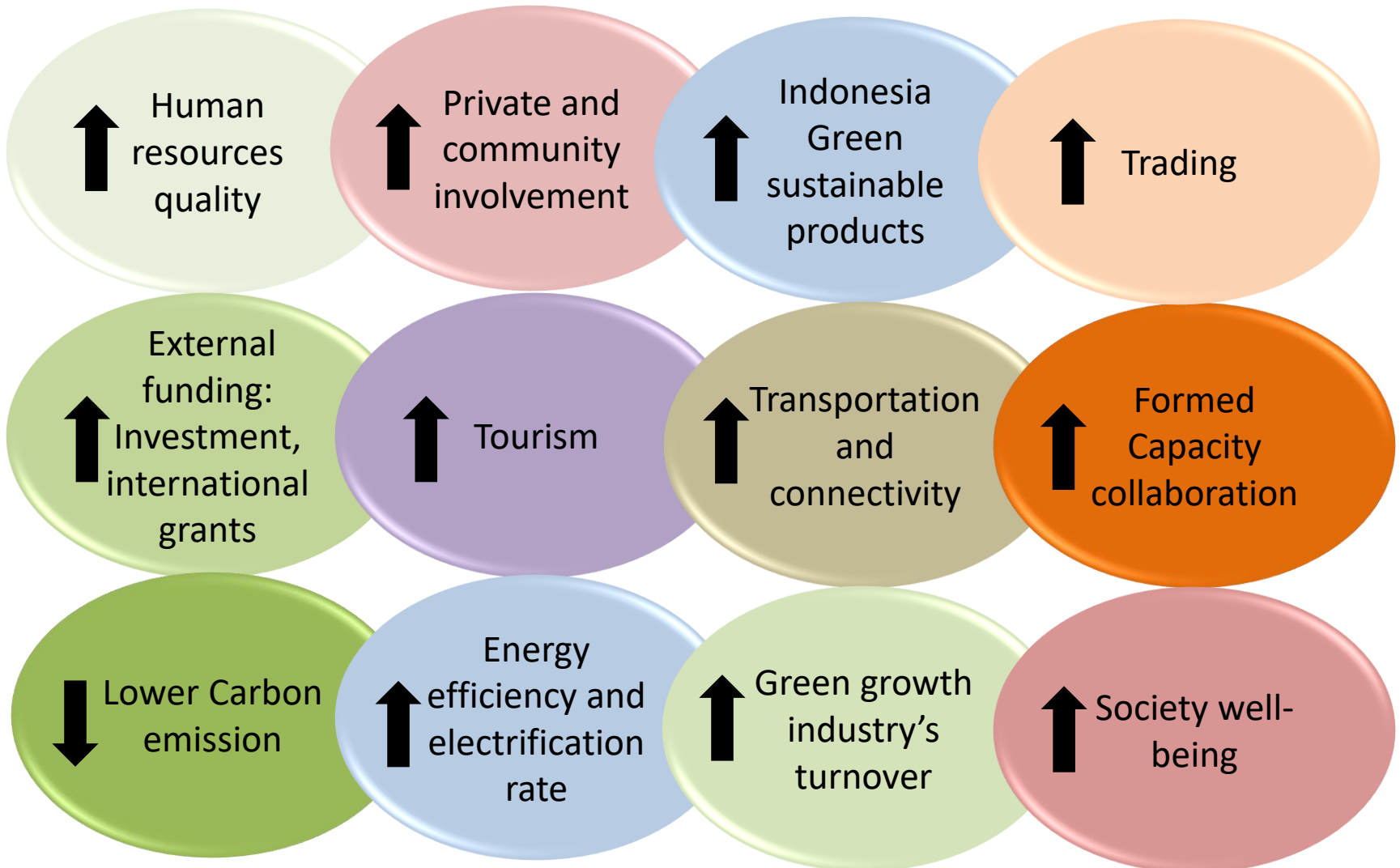
Example from Low Carbon case in Greater Copenhagen, Denmark

Successful Low-Carbon parameters



Example from Low Carbon case in Greater Copenhagen, Denmark

Low-carbon Economy Region benefits



Some main concerns

Ready for a transition to be Low-Carbon Economy region

- First, we **understand** what we are: going to do/doing/going to achieve!
- It's not about how to make an advanced technology or product?

Making something for **benefiting society**



Thank you