



Promoting GESI & CSE in PPP/PSE to Address Development Disparity

Nur Hayati & Siti Ruhanawati

Indonesia Development Forum, Jakarta, 10-11 July 2018



Key Issues on GESI-CSE in Infrastructure

Differences in:

- Needs and responsibilities
- Access to and control of infrastructure-inequal
- Employment patterns and participation rates

Absence of:

- Social and Gender Analysis
- Documentation and disaggregation of statistics and data
- Consultation and participation with civil society
- GESI in policy and program design



GESI-CSE: Gender Equality and Social Inclusion – Civil Society Engagement

PPP: Public Private Partnerships

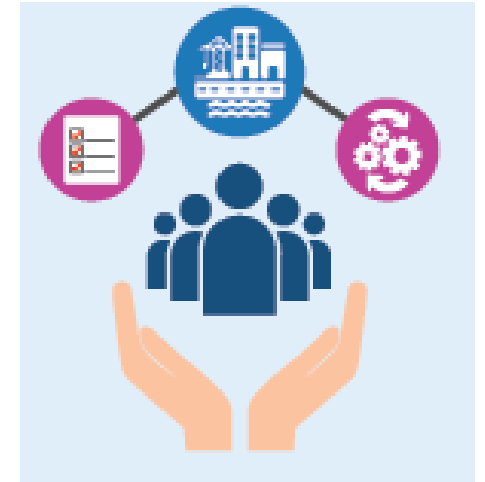
PSE: Private Sector Engagement





GESI-CSE Integration in PPP

- **Project Concept Note**
- **Project Design**
- **Gender Responsive Checklist & Project Impact Checklist**
- **GESI Action Plan & its Monitor Compliance Standards**
- **Request for Tender Document**
- **Gender Independent Audit by CSOs**





Conclusion

- **GESI & CSE integration should apply for conventional procurement and PPP**
- **Special attention on GESI factors is needed up-front on PPPs before long-term contracts lock in arrangements that are difficult to change**





Thank you

Siti.Ruhanawati@kiat.or.id

nur.hayati0808@gmail.com

Website: <http://kiat.or.id/>

