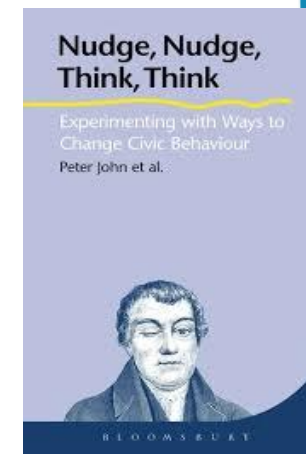
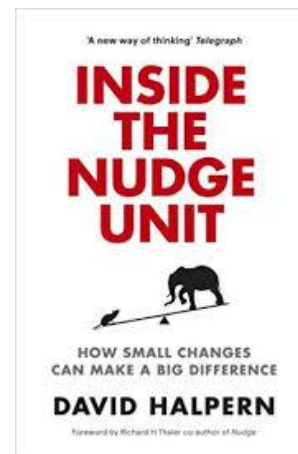
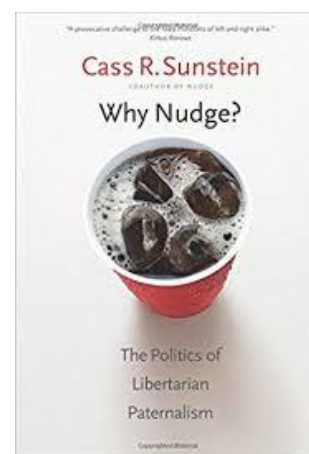
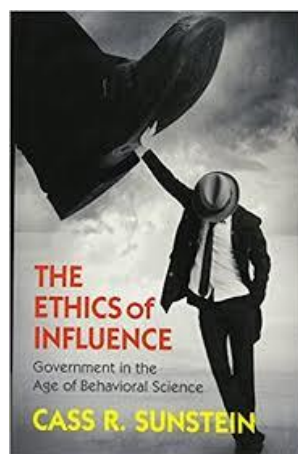
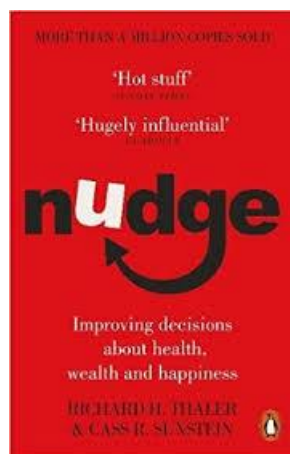


# The promise of behavioural insights to tackle development issues and shaping public policies in Indonesia

ARIF BUDY PRATAMA

PUBLIC ADMINISTRATION DEPARTMENT, UNIVERSITAS TIDAR

arifpratama@untidar.ac.id



# Introduction: key challenges faced by the government of Indonesia

Burden of  
regulation

Lack of  
Innovation

Regulatory Overlap

Low score on  
governance  
indicator (World  
Bank, 2017)

Over-regulated

ranked 87 in global  
innovation index,  
above Belarus and  
below Bosnia

20:04 43%

detiknews

## Tembus 60 Ribu, Ini Daftar 10 Jenis Regulasi Terbanyak di Indonesia

Sepuluhnya dari Jepang, dan Kementerian PPA langsung menerapkan ilmu yang diserap. Dirjen Peraturan Perundangan mengupdate peraturan yang ada di Indonesia. Berikut peringkatnya:

1. Peraturan Daerah sebanyak 15.086 peraturan.
2. Peraturan Menteri sebanyak 11.091 peraturan.
3. Keputusan Presiden sebanyak 5.226 peraturan.
4. Peraturan Pemerintah sebanyak 4.790 peraturan.
5. Peraturan Lembaga pemerintah Non Kementerian 3.015 peraturan.
6. UU sebanyak 1.889 peraturan.
7. Peraturan Presiden sebanyak 1.764 peraturan.
8. Perpu sebanyak 171 peraturan.
9. Otoritas Jasa Keuangan sebanyak 188 peraturan.
10. Bank Indonesia sebanyak 45 peraturan.

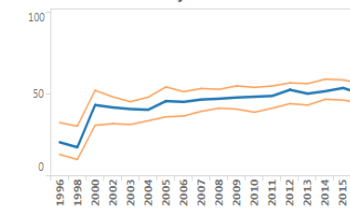
"Total mencapai 60 ribu lebih regulasi," kata Direktur Pengundangan, Ditjen Peraturan Perundangan, Kementerian PPA.

Rabu 08 Maret 2017

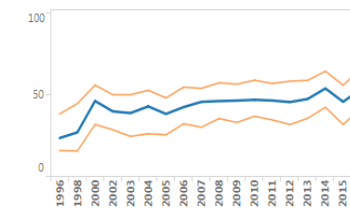
## Worldwide Governance Indicators

Income Group, Region, or Country: Indonesia

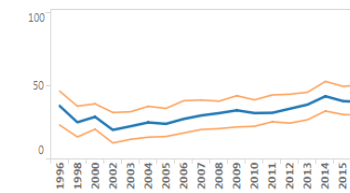
### Voice and Accountability



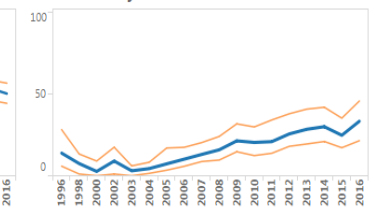
### Government Effectiveness



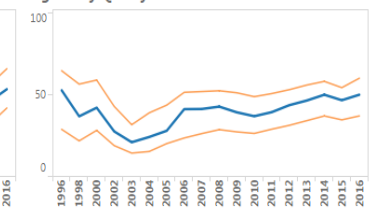
### Rule of Law



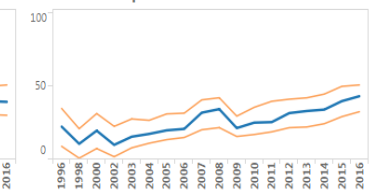
### Political Stability and Absence of Violence/Terrorism



### Regulatory Quality



### Control of Corruption



Year  
All  
Listed in order:  
( ) Income Group Averages,  
(\*) Regional Averages, and  
individual Countries.

search ->  
○ High income: nonOECD  
○ High income: OECD  
○ Low income  
○ Lower middle income  
○ Upper middle income  
○ East Asia & Pacific  
○ Europe & Central Asia  
○ Latin America & Caribbean  
○ Middle East & North Africa  
○ North America  
○ South Asia  
○ Sub-Saharan Africa  
○ Afghanistan  
○ Albania  
○ Algeria  
○ American Samoa  
○ Andorra  
○ Angola  
○ Anguilla  
○ Antigua and Barbuda  
○ Argentina  
○ Armenia  
○ Aruba  
○ Australia  
○ Austria  
○ Azerbaijan  
○ Bahamas, The  
○ Bahrain  
○ Bangladesh

The inner, thicker blue line shows the selected country's percentile rank on each of the six aggregate governance indicators. The outer, thinner red lines show the indicate margins of error.

Source: Kaufmann D., A. Kraay, and M. Mastruzzi (2010), *The Worldwide Governance Indicators: Methodology and Analytical Issues*

The Worldwide Governance Indicators are available at: [www.govindicators.org](http://www.govindicators.org)

Note: The Worldwide Governance Indicators (WGI) are a research dataset summarizing the views on the quality of governance provided by a large number of enterprise, citizen and expert survey respondents in industrial and developing countries. These data are gathered from a number of survey institutes, think tanks, non-governmental organizations, international organizations, and private sector firms. The WGI do not reflect the official views of the World Bank, its Executive Directors, or the countries they represent. The WGI are not used by the World Bank Group to allocate resources.



INDONESIA  
DEVELOPMENT  
FORUM 2018  
INSPIRE • IMAGINE • INNOVATE • INITIATE

# Nudge as the root of behavioural insights

## Nudge:

any aspect of the **choice architecture** that **alters people's behaviour in a predictable way** without forbidding any options easy and cheap, **'libertarian paternalism'** principle

Nudge **is not** a mandate, enforcement nor legislation

## Behavioural insights:

Derived from the **behavioural sciences** that are **being applied by government** to make **public policies work better.**

Formed based on **empirically tested-result**, using sound **experimental methods** to provide **'work works'** in the policy

Understand the  
problem

Setting desired  
behavioural  
Change

Understand  
context

Design-  
Intervention-  
Experiment

Learning





INDONESIA  
DEVELOPMENT  
FORUM 2018  
INSPIRE · IMAGINE · INNOVATE · INITIATE

# Behavioural Insights in Practices



Blackpool UK

<https://theworldnews.net/gb-news/taking-steps-to-tackle-blackpool-s-litter-problem>



Copenhagen Airport

<http://designincubationcentre.com/nudge/category/uncategorized/>



<https://medium.com/dare-to-challenge/nudging-ea913fa54ae0>



Singapore

<https://designincubationcentre.com/nudge/tag/singapore/>



112 case studies on consumer protection, education, energy, environment, finance, health and safety, labour market policy, public service delivery, taxes, and telecommunication (OECD, 2017)





# Behavioural Insights and Public Policy

## Institutions applying BI to public policy around the world



Institutions inside government

Institutions outside government

Multi-national organisations



INDONESIA  
DEVELOPMENT  
FORUM 2018  
INSPIRE • IMAGINE • INNOVATE • INITIATE

# Take away points

- ☐ Behavioural insights has a potential to be applied in Indonesian public policy making
- ☐ Comparing to regulation/law, behavioural insights have some advantages (Pratama, 2015) see:  
<http://www.thejakartapost.com/news/2016/04/15/nudging-or-regulating.html>
  - a. Regulations do not assure obedience from citizens
  - b. Making regulations are costly (time, budget, resources) and sometimes carry political bias
  - c. Behavioural insights offers democratic and non-coercion mechanism to managing society
- ☐ Walk hand in hand with law and regulation
- ☐ As we practice decentralisation, sort of nudge units/Behavioural insight team can be pioneered in the local government level

