



INDONESIA
DEVELOPMENT
FORUM 2018
INSPIRE · IMAGINE · INNOVATE · INITIATE



KNOWLEDGE
SECTOR INITIATIVE



Eliminating Malaria – Reducing Disparities

Indonesia Malaria Elimination by 2030

Dr. Nancy Dian Anggraeni, M.Epid – Ministry of Health Indonesia

Dr. Maria Endang Sumiwi, MPH – UNICEF Indonesia



unicef  for every child



Malaria is a disease of poverty

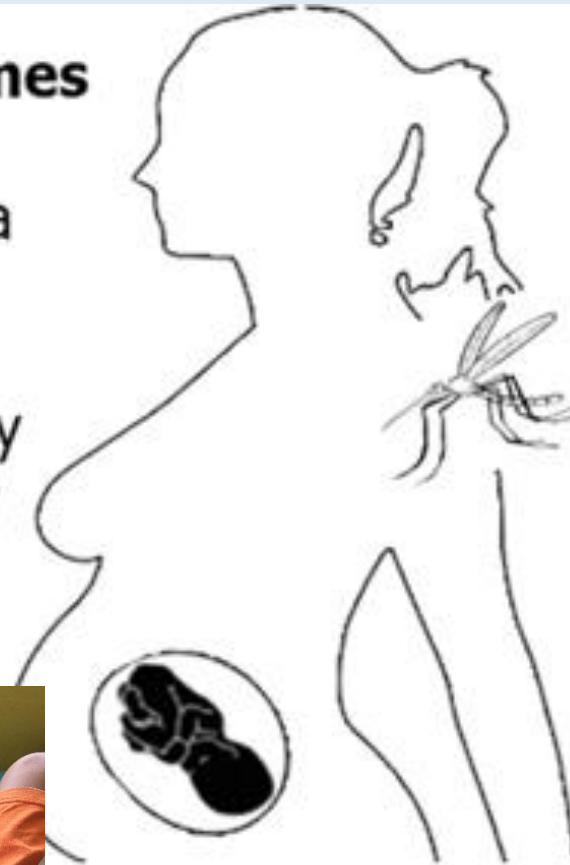


ECONOMIC LOSS

<http://www.cosmosclub.org/journals/2000/asher.html>

Maternal outcomes

- Maternal anaemia
- Cerebral malaria
- Severe malaria
- Maternal mortality
- Recurrent or new plasmodium infections



Child outcomes

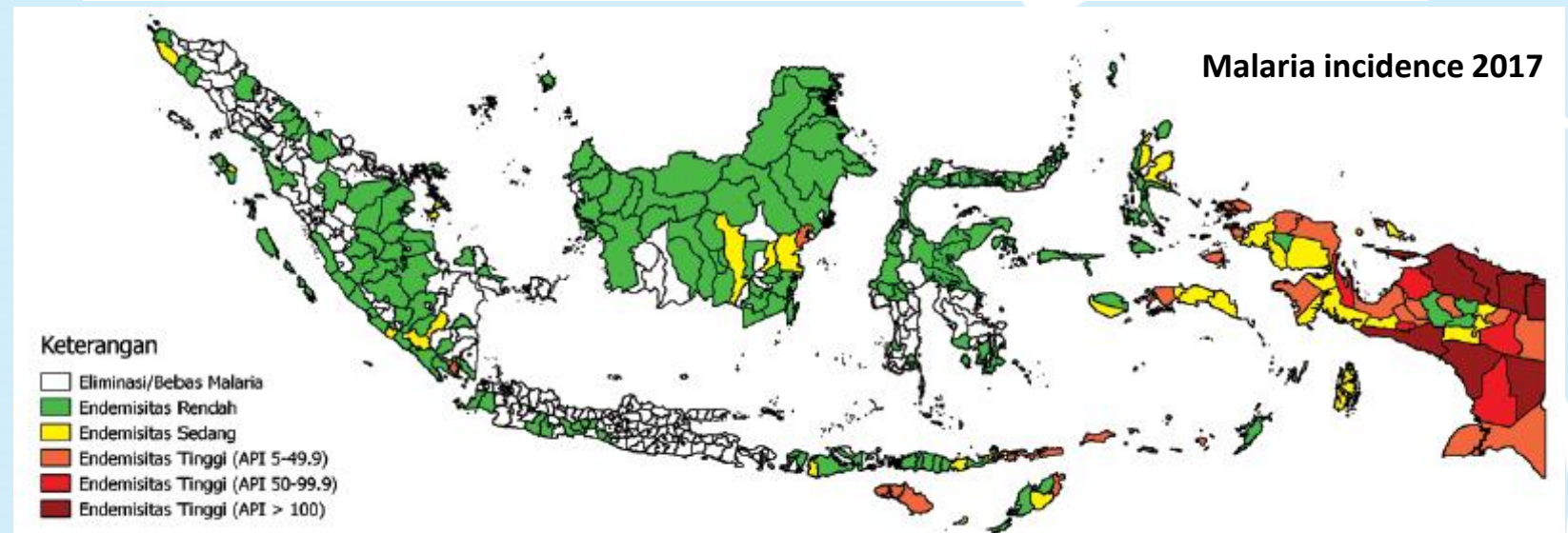
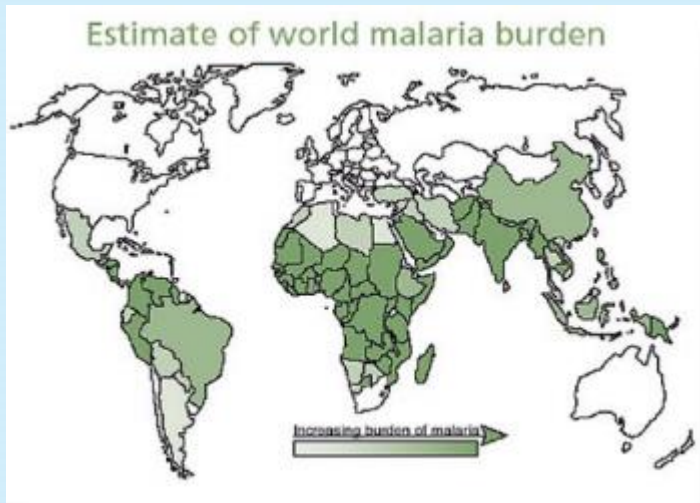
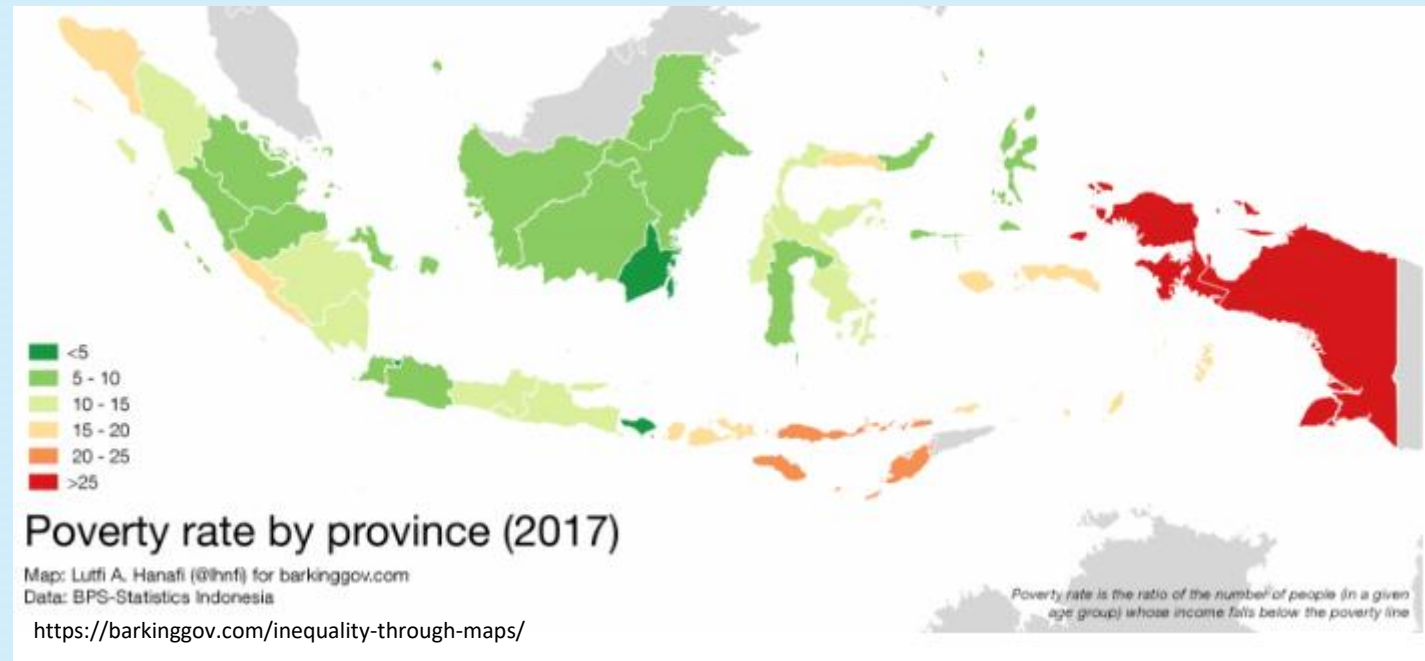
- Abortion
- Stillbirth
- Preterm delivery
- Low birth weight
- Neonatal mortality
- Congenital malaria
- Infant mortality
- Anaemia
- Poor developmental / behavioural outcome

ANEMIA, POOR GROWTH

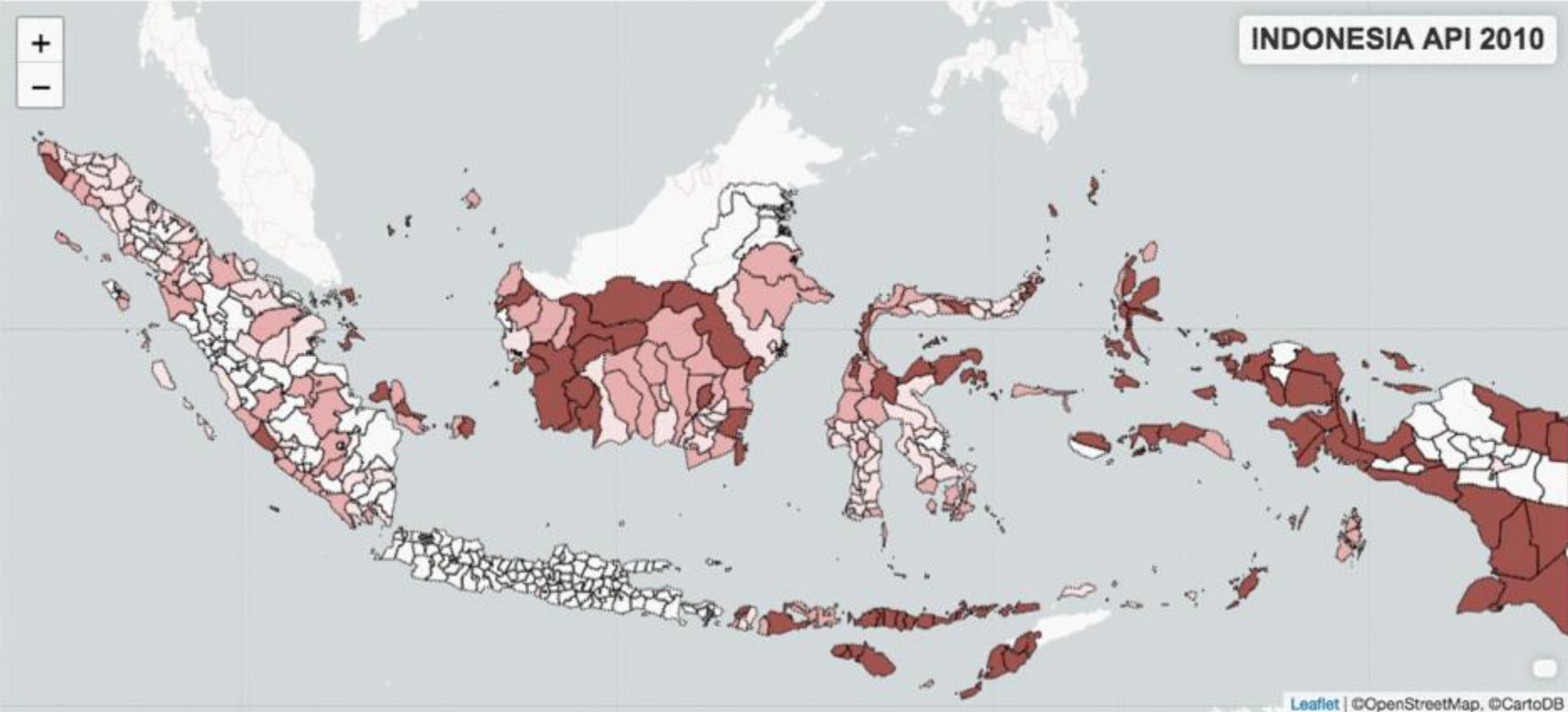
<http://pharmaguidenigeria.com.ng/tag/mosquito/>



Malaria & geographic disparities



Today, more than half the districts in Indonesia (72% populations) are malaria free.





Strong leadership is the key to successful program

ALL ENDEMIC AREAS	2004	2005	2006	2007	2008	2009	2010	2011	2012	2013	2014	2015	2016	2017
National Ministerial Decree on Malaria Elimination						●								
Increased global and domestic financing for malaria														
Artemisinin-based combination therapy introduction and scale		●												
Laboratory confirmation mandated for all malaria cases						●								
Quality assurance for diagnosis														
Malaria screening and treatment in pregnant women														
Malaria inclusion into sick child management in endemic areas														
Improved malaria surveillance and reporting														
Cross-district learning and mentorship														
HIGH-TRANSMISSION AREAS														
Long-lasting insecticide treated bednets introduction and scale														
Indoor residual spraying in high-risk areas and outbreaks														
Larval control and environmental management														
LOW-TRANSMISSION AREAS														
Enhanced case investigation														
Transmission foci mapping														
Active surveillance and case finding														
POST-ELIMINATION AREAS														
Malaria screening among in-migrants														



74% of malaria cases is in Papua

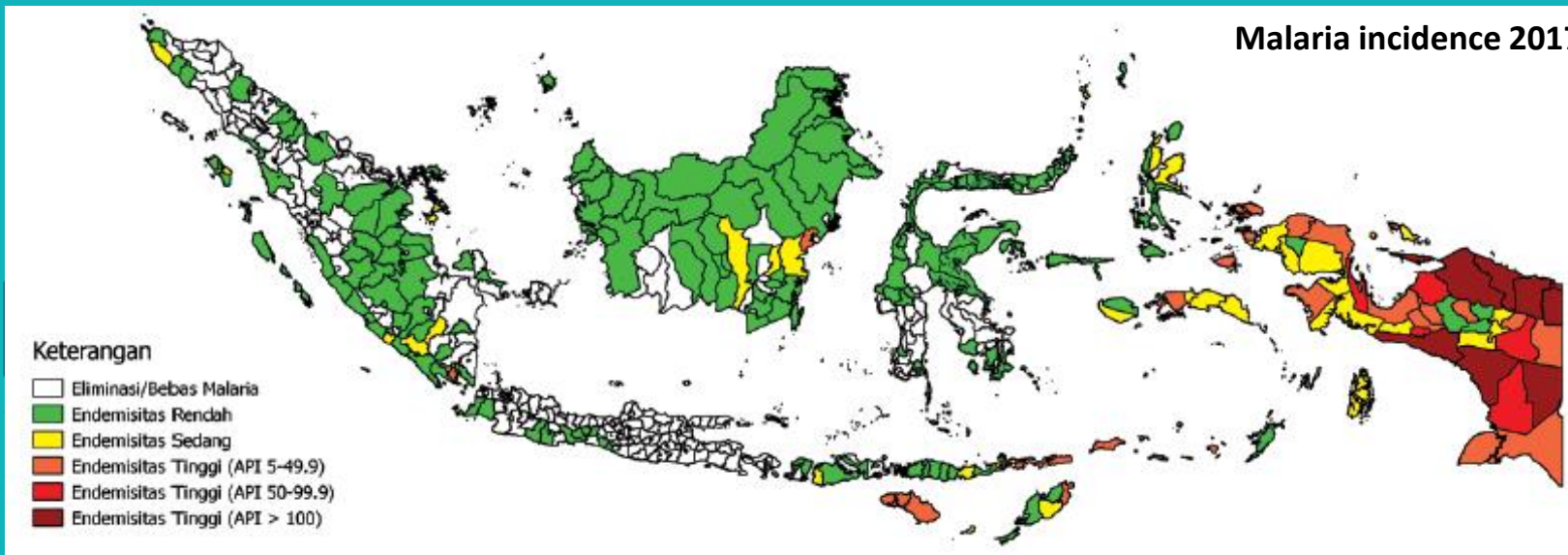
39 HIGH ENDEMIC DISTRICTS

- Papua : 21 districts
- East Nusa Tenggara : 7 districts
- West Papua : 6 districts
- Maluku : 3 districts
- Lampung : 1 district
- East Kalimantan : 1 district

COST for MALARIA ELIMINATION 2030

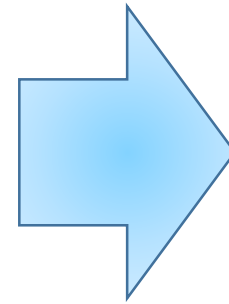
1.5 million USD per year

<http://www.shrinkingthemalariamap.org/sites/www.shrinkingthemalariamap.org/files/content/page/an-investment-case-for-eliminating-malaria-in-indonesia.pdf>



Malaria Elimination is Everybody's Business

- Better housing
- Better sanitation
- Improved environment/infrastructure
- Bigger investment in health system
- Stronger community engagement



A Future Free
from Malaria
for Indonesian
Children

