



# Empowering Communities and Linking Teachers' Pay with Performance for Better Student Outcomes



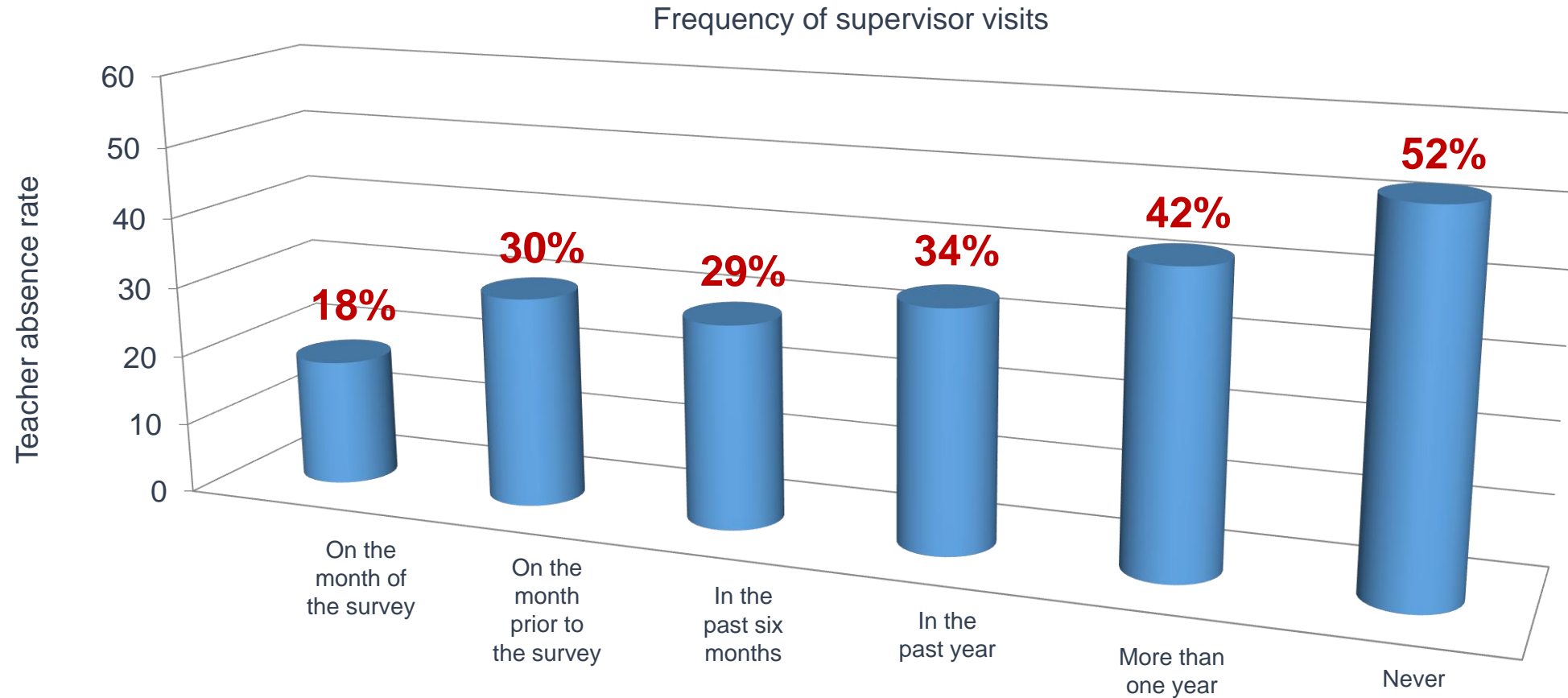
Indonesia Development Forum – 11 July 2018

# Teachers are missing from classrooms



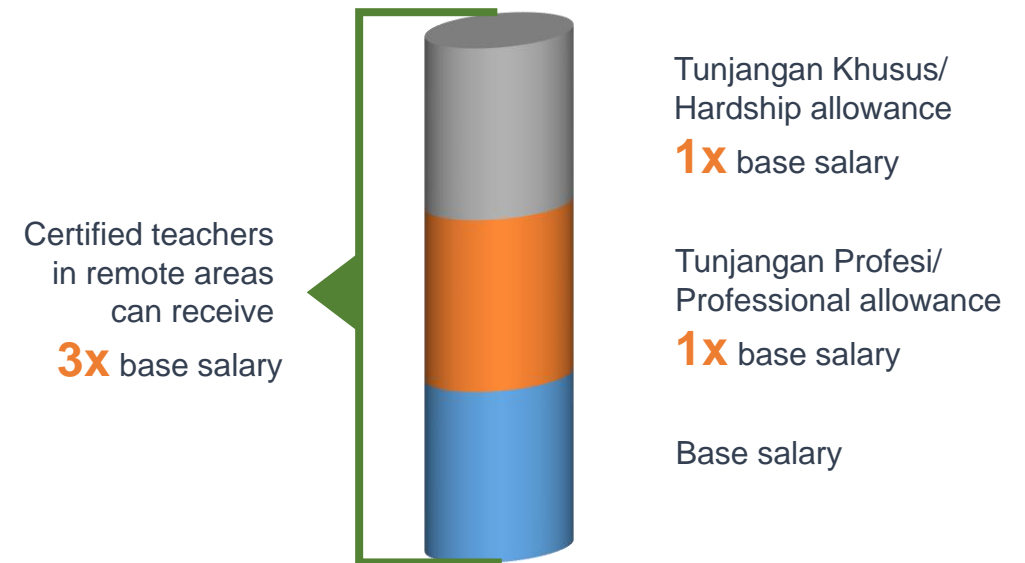
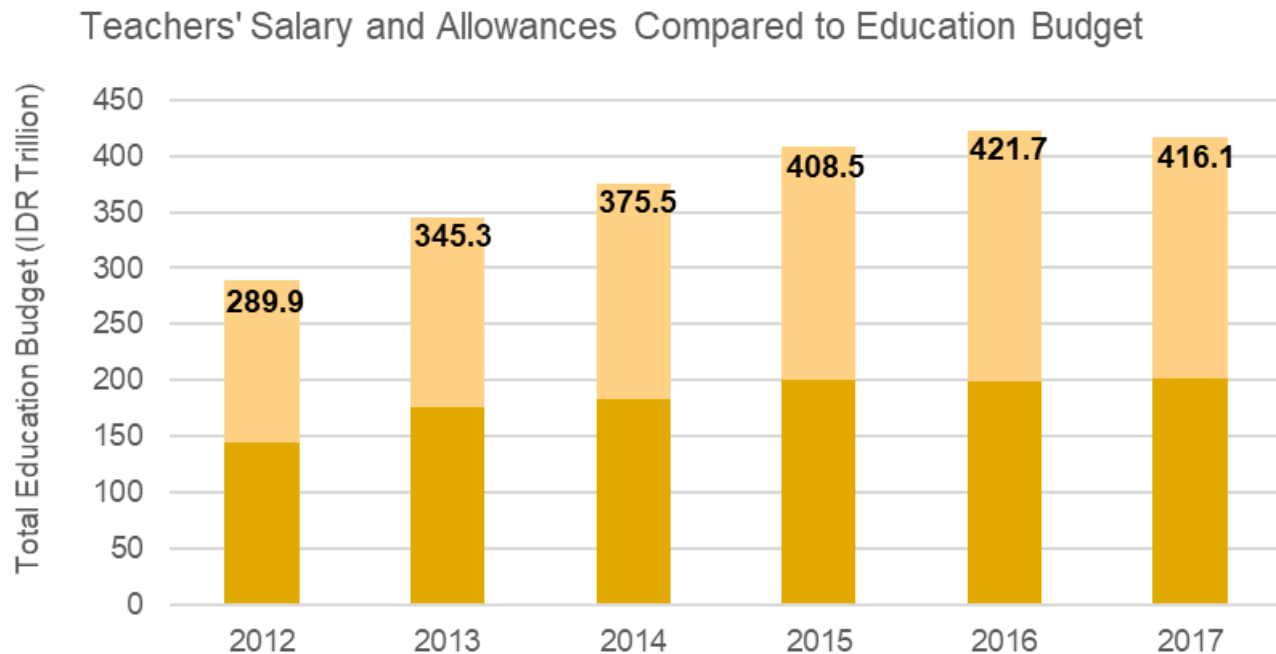
**One of five** teachers was absent from remote schools, at **double** the national rate (ACDP, 2014)

# Teacher monitoring by government supervisors is constrained by resources and geographical challenges



Teacher absenteeism rates correlate with frequency of supervisor school visits (UNICEF, 2012)

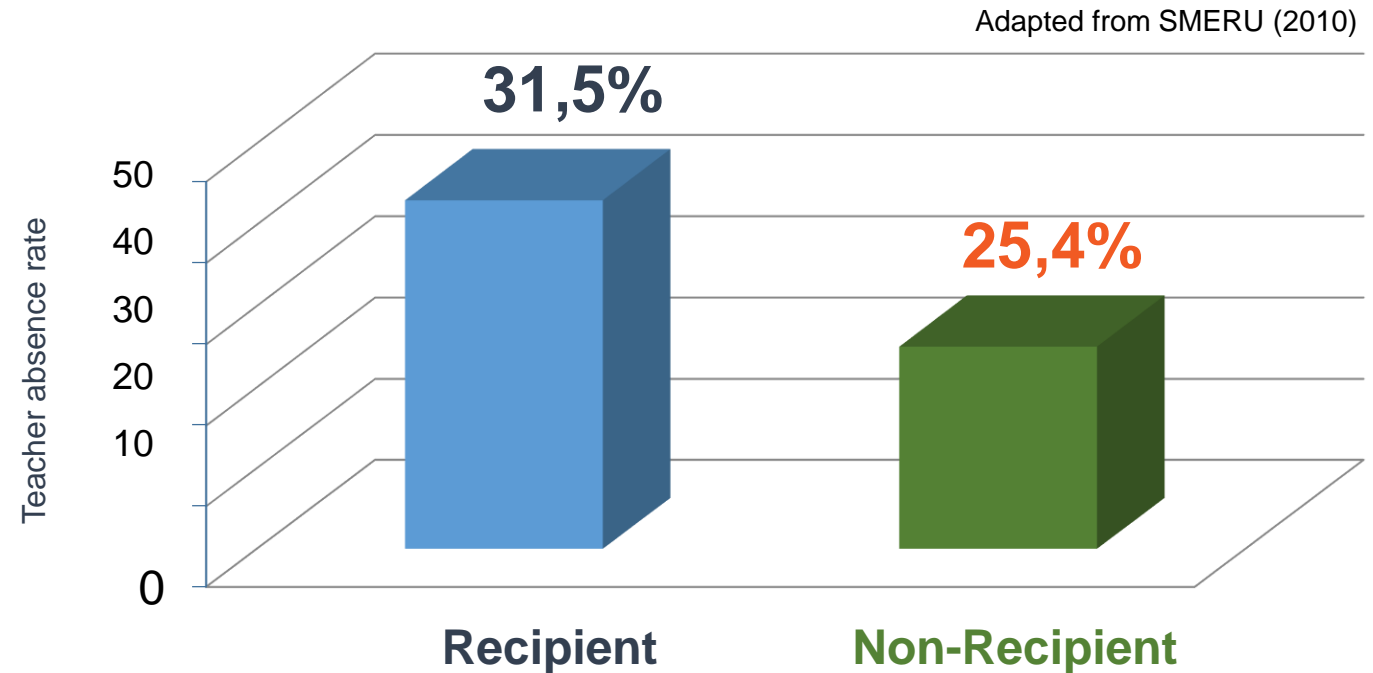
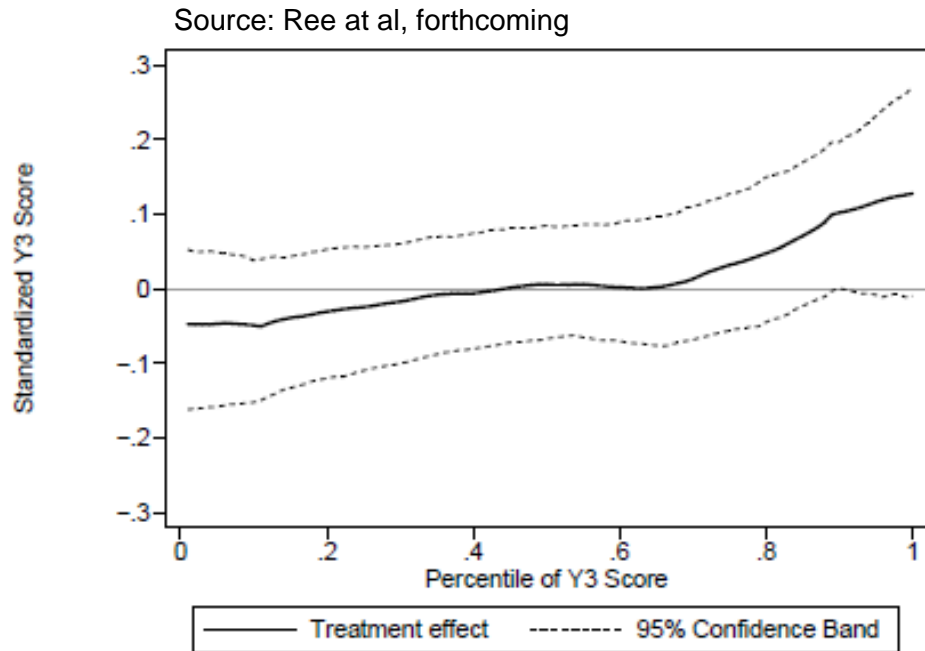
# Half of the government spending on education covers teacher salary and allowances ...



Teachers in remote areas receive hardship allowance at **one times their base salary**. Certified teachers receive professional allowance, also at one times their base salary.

# ... but teacher professional allowance ... “led to no improvement in student learning outcomes”

(Ree et al, 2018)



Teachers who receive remote area allowance had **higher** absenteeism rate compared to non-recipients (SMERU, 2010)

# KLAT Guru combines community empowerment with pay for performance of teacher remote area allowance

Group 1	Community empowerment
Group 2	Community empowerment + Pay for performance based on <b>teacher presence</b> , verified by user committee
Group 3	Community empowerment + Pay for performance based on <b>teacher service performance</b> , evaluated by user committee



The user committee consists of minimum **9** members, consisting of **6** parent representative from each grade and **3** community leaders, with a minimum of 50% female membership

Community empowerment/  
Pay for performance

← tied to →

Education service  
delivery

Regulatory  
umbrella  
needed  
?

Outcome on  
teacher  
presence  
?

Outcome on  
teacher  
service  
performance  
?

Impact on  
student  
learning  
outcomes  
?



- Minister & DG decrees
- MoU with Regents
- Regents regulations
- Head of District Education decrees
- Head of Village decrees



KIAT Kamera:  
Android-based  
camera application



Community Score Card  
with 5-8 indicators  
being agreed with  
teachers and can be  
amended every  
semester

420 TUMBANG TITI  
KEMAMPUAN BELAJAR MURID: MEMBACA BAHASA INDONESIA

	MEMBACA BAHASA VEJAY	MEMBACA BAHASA VEJAY	MEMBACA BAHASA VEJAY	MEMBACA BAHASA VEJAY	MEMBACA BAHASA VEJAY	MEMBACA BAHASA VEJAY
Kelas 1	40%	60%				
Kelas 2		100%				
Kelas 3		100%				
Kelas 4	33%	67%				
Kelas 5	33%	67%				
Kelas 6		67%				33%

Diagnostic Student  
Learning Assessment  
(SLA) tools to identify  
literacy and math  
competence along the  
learning continuum

# Pilot locations and participants



**2** West Kalimantan  
East Nusa Tenggara  
Provinces



**270**  
Very remote schools



**1778**  
Primary school  
teachers



**1827**  
User committee  
members

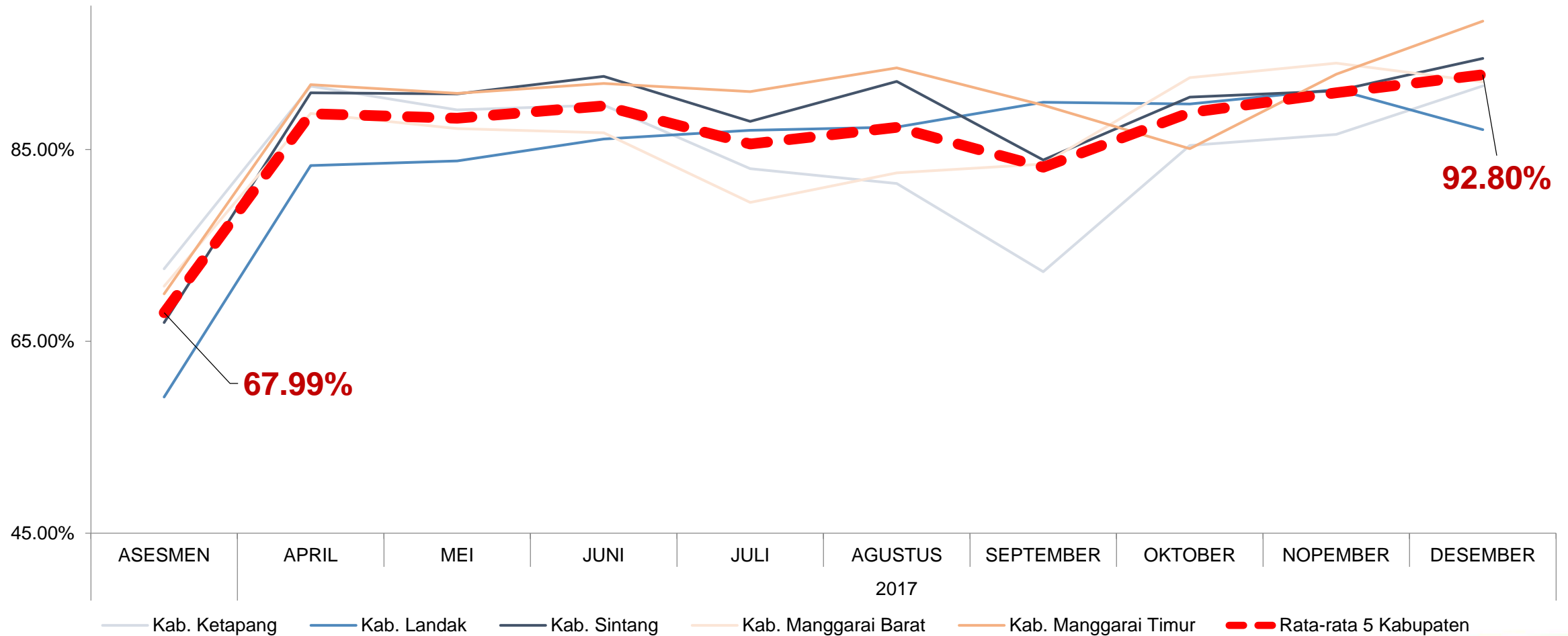


**26062**  
Primary school  
students

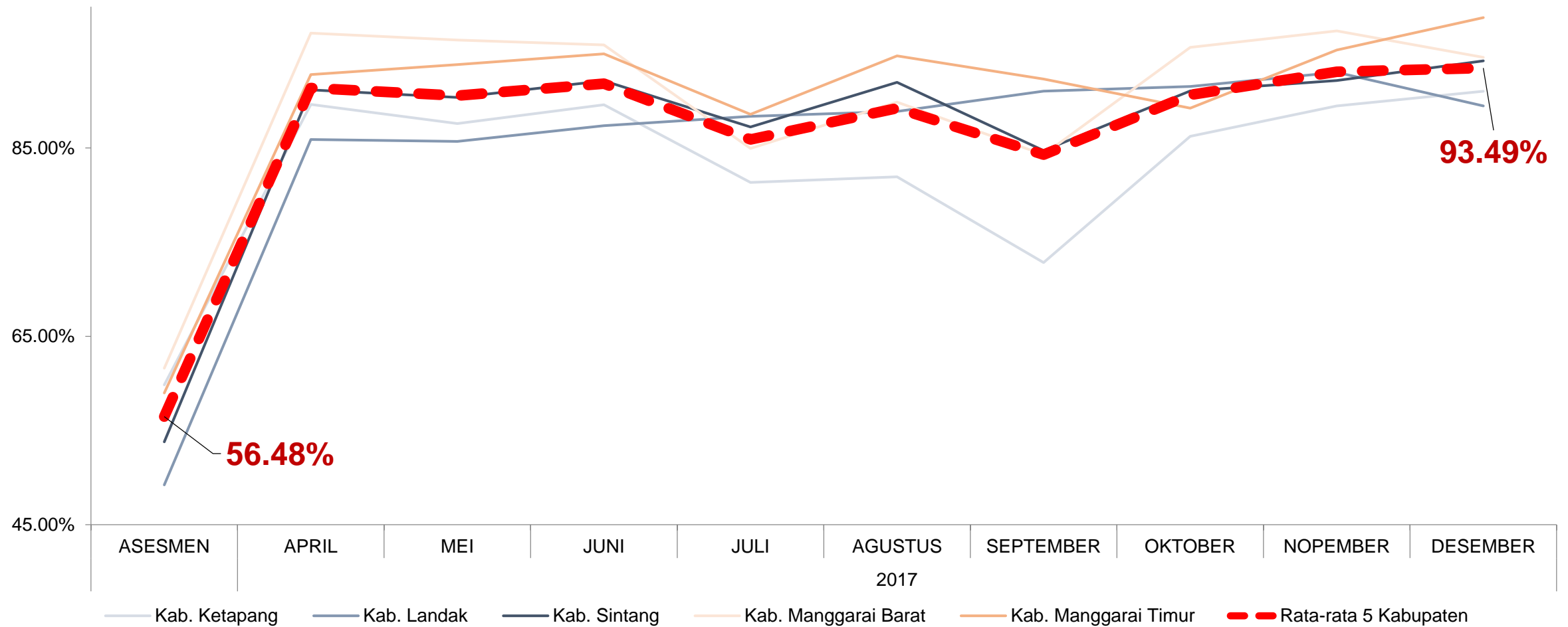




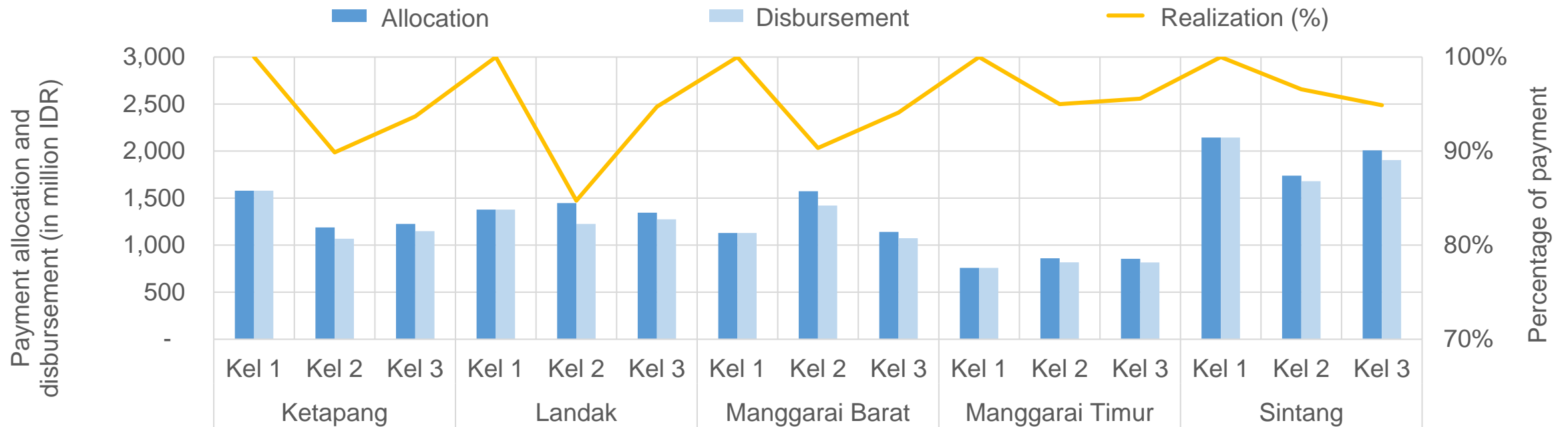
# After one year implementation (end 2016-2017), community evaluation on teacher presence improved from 68% to 92%...



# ... community evaluation of teacher service performance improved from 56% to 93% ...



# Payment of remote area allowance in pilot schools improved in efficiency by 7 percent from a total allocation of IDR 13.4 billion in 2017



Source: KIAT Nilai and SKTK Semester I and II 2017

# District, sub-district, and village governments provide strong supports and allocate resources

Year	District government budget allocation	Village government allocation (DD/ ADD)		
		Rupiah	% School	% Village
<b>2017</b>	1,562,000,000	889,650,000	169/203 = 83%	169/176 = 96%
<b>2018</b>	929,500,000	1,844,900,000	187/203 = 92%	169/176 = 96%
<b>Total</b>	2,491,500,000	2,734,550,000		

In 2017 and 2018, district governments allocated IDR 2.49 billion from APBD, and **96%** pilot villages allocated a total of IDR 2.7 billion from ADD/DD

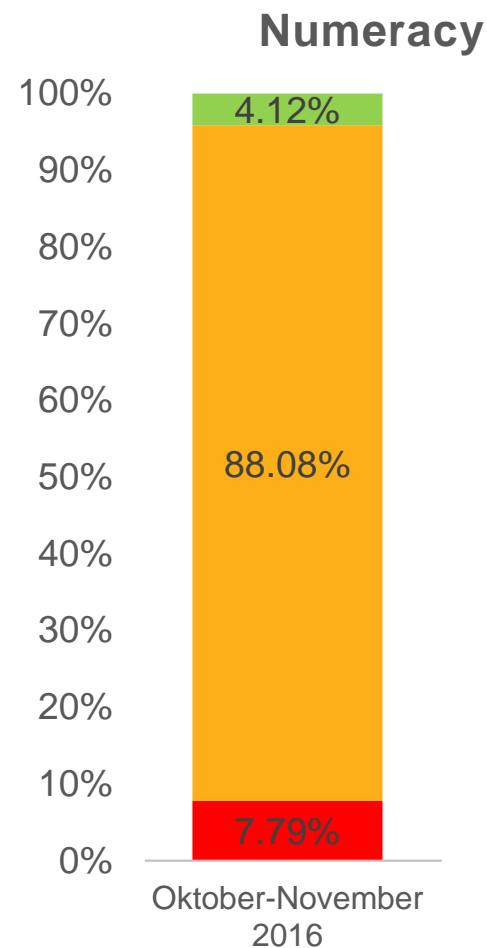
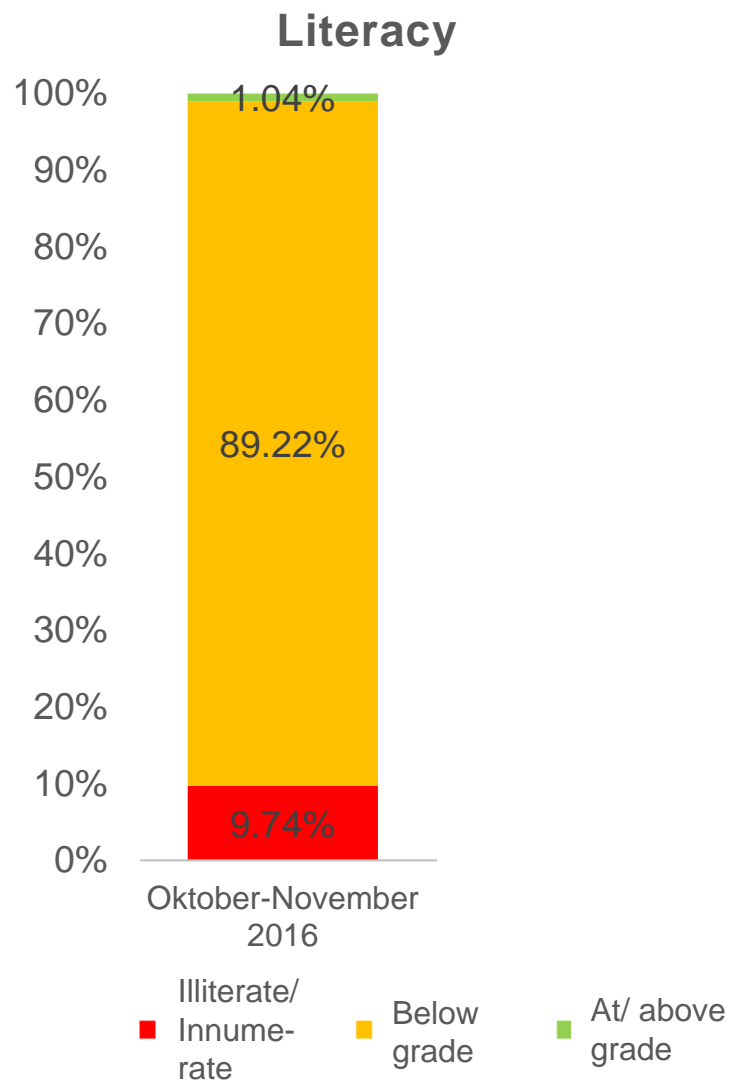
# Teachers conduct student-centered learning inside and outside the classrooms ...



... and parents and communities are more supportive of learning activities beyond schools



# Early findings indicate that student literacy and numeracy improved in all treatment schools



Source: World Bank survey & TNP2K diagnostic tests to 5967 students in 203 pilot intervention schools



# Terima Kasih

KIAT Guru is initiated by TNP2K (Tim Nasional Percepatan Penanggulangan Kemiskinan) and Ministry of Education and Culture, Teacher and Education Personnel Directorate.

Funding for KIAT Guru is generously provided by the Government of Australia, USAID, dan RISE (Research for Improving Systems in Education).

## For more information:

- <https://www.youtube.com/watch?v=HUV7t4icQU0>
- <http://www.tnp2k.go.id/en/programmes/kiat-guru/about-kiat-guru/>
- Contact: Dewi Susanti | [dsusanti@worldbank.org](mailto:dsusanti@worldbank.org) | Senior Social Development Specialist, World Bank

