

RISE PROGRAMME IN INDONESIA

Education Policymaking and Learning Outcomes in Indonesia's Districts

Luhur Bima, Daniel Suryadarma, Valentina Utari, Anisah H. Zulfa

11 July 2018

An “Indonesian education system”?

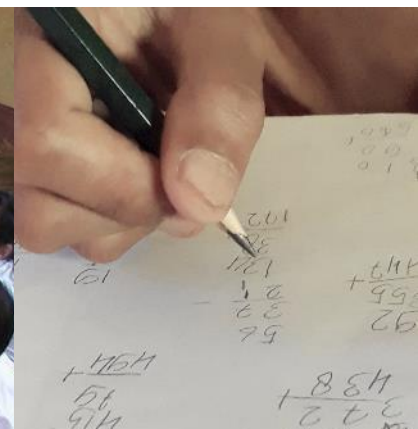


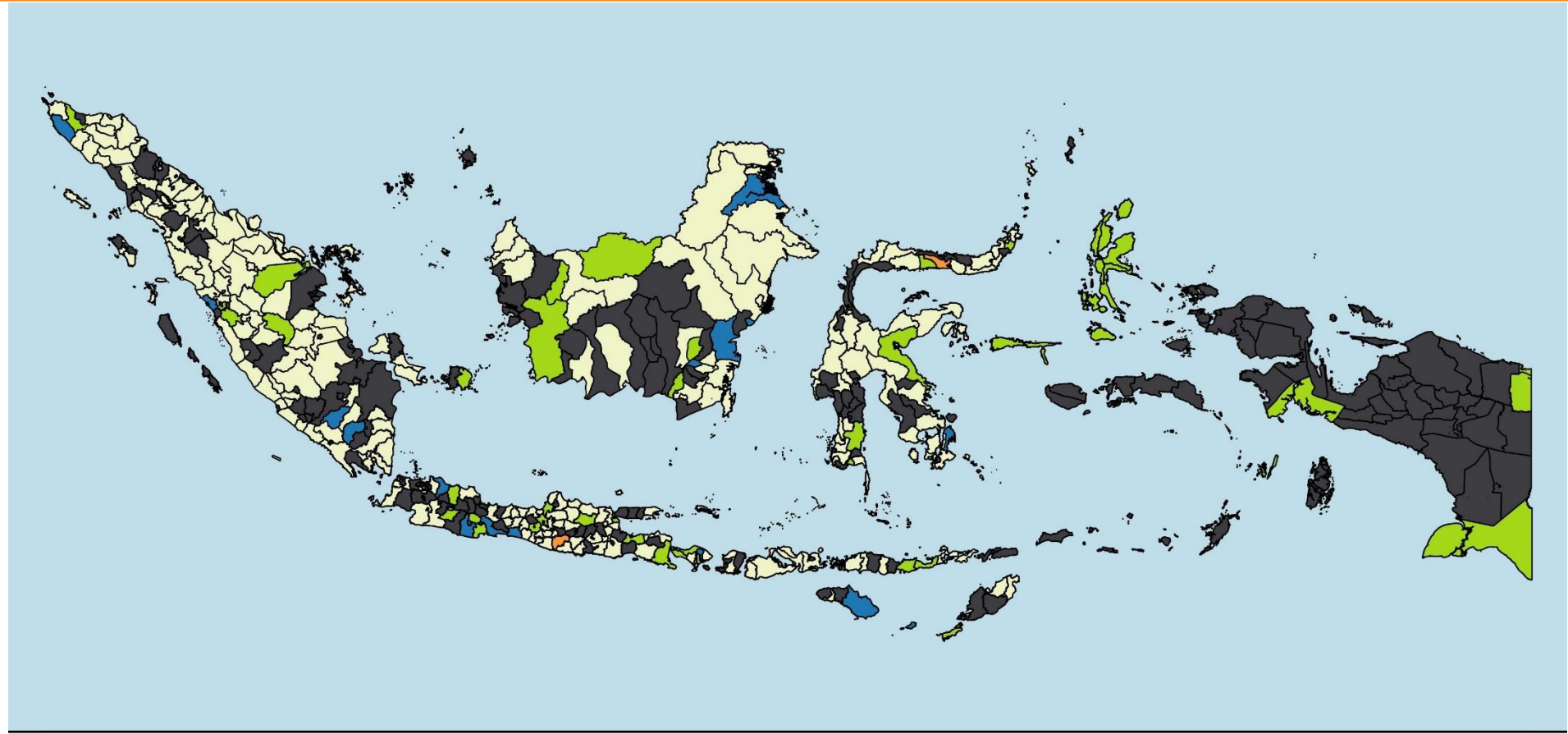
- 2001 big-bang decentralization, 500+ districts responsible for basic education
- 65% central education budget goes to sub-national government
- Very little systematic information on district education policies

This presentation



1. A systematic mapping of district education policies
2. Examine their relationships with education quality

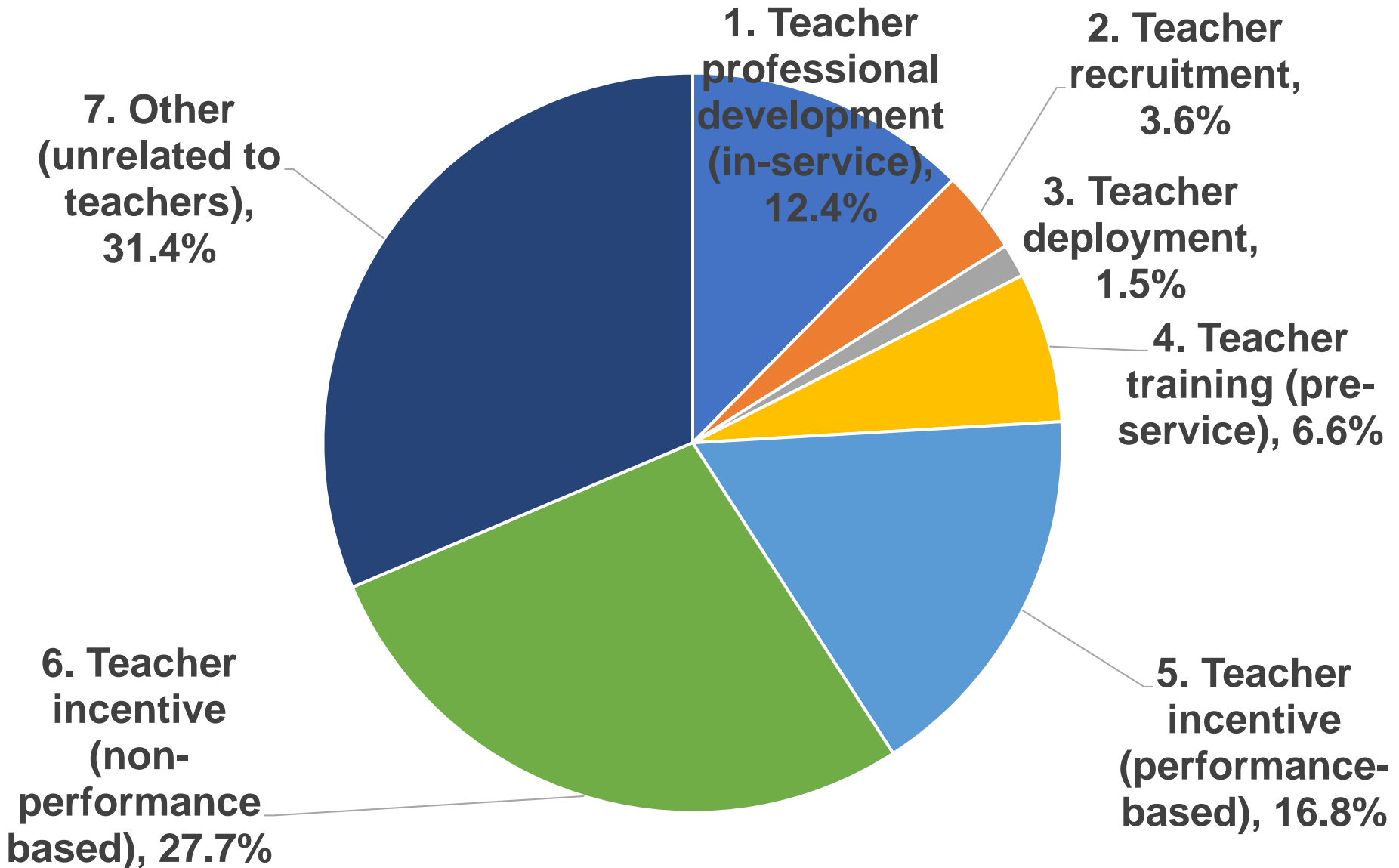




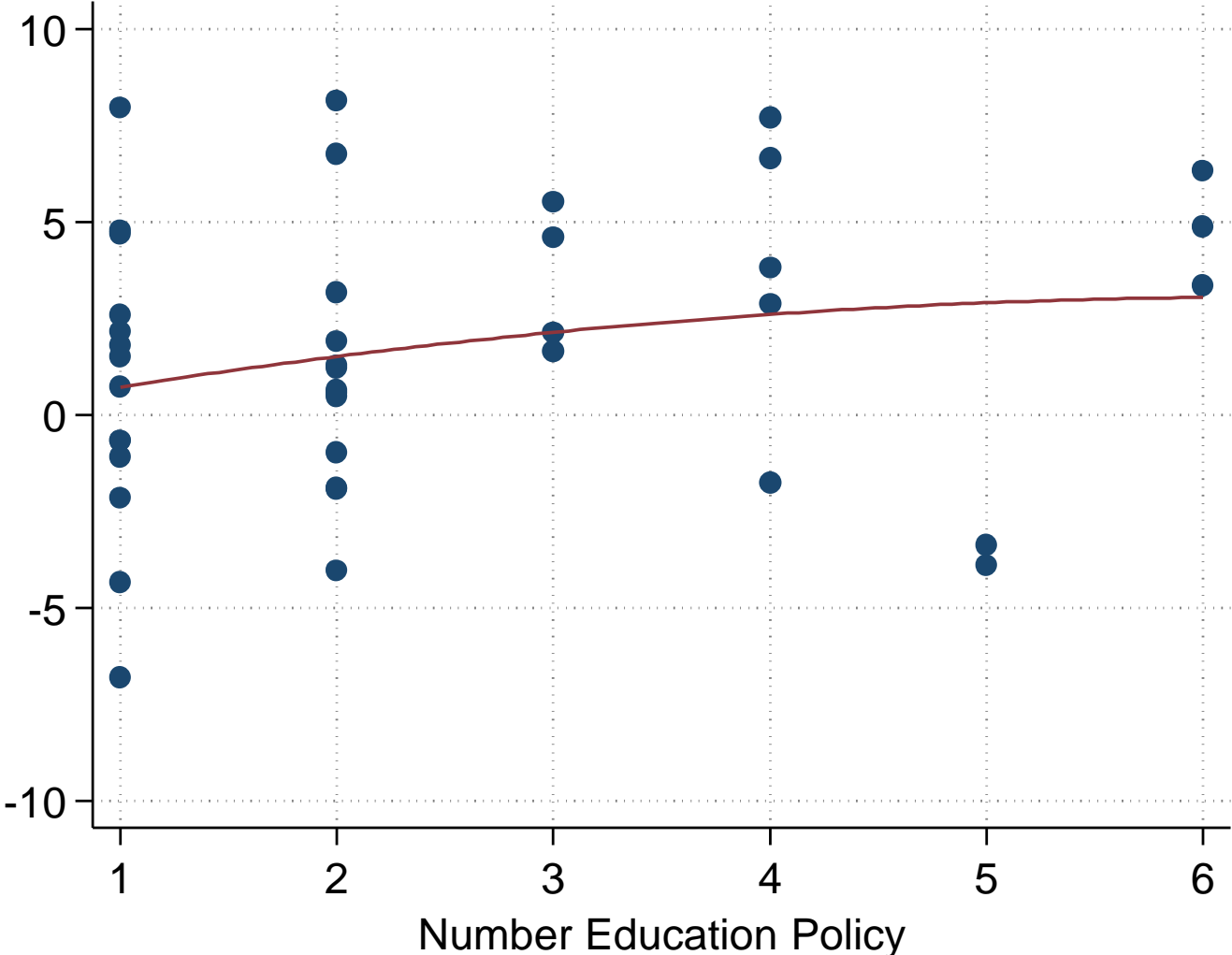
■ Surveyed Districts in 2017
■ Surveyed Districts in 2018

■ Surveyed Districts in 2017 and 2018
■ Excluded Districts

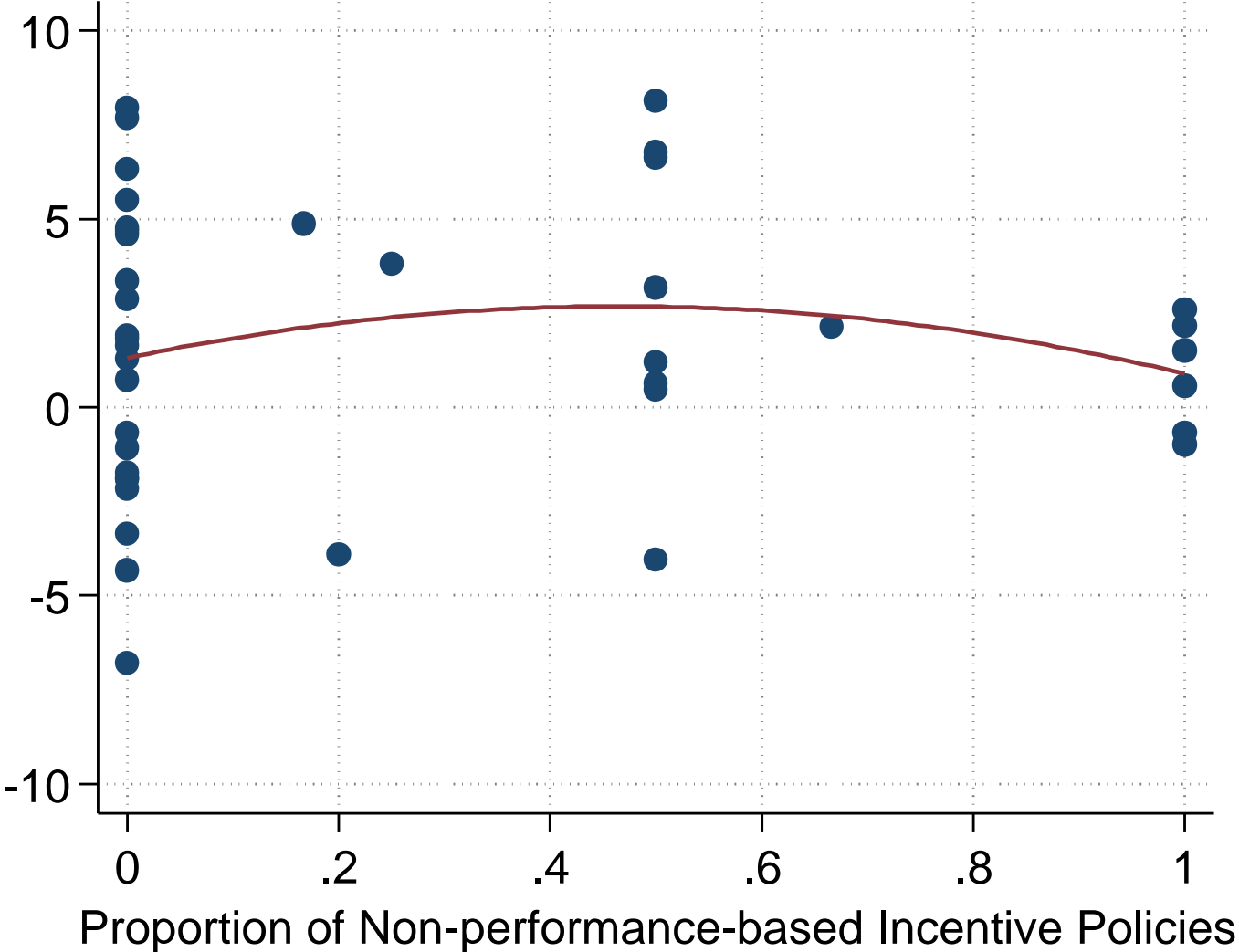
137 policies from 63 districts; 70% are on teachers



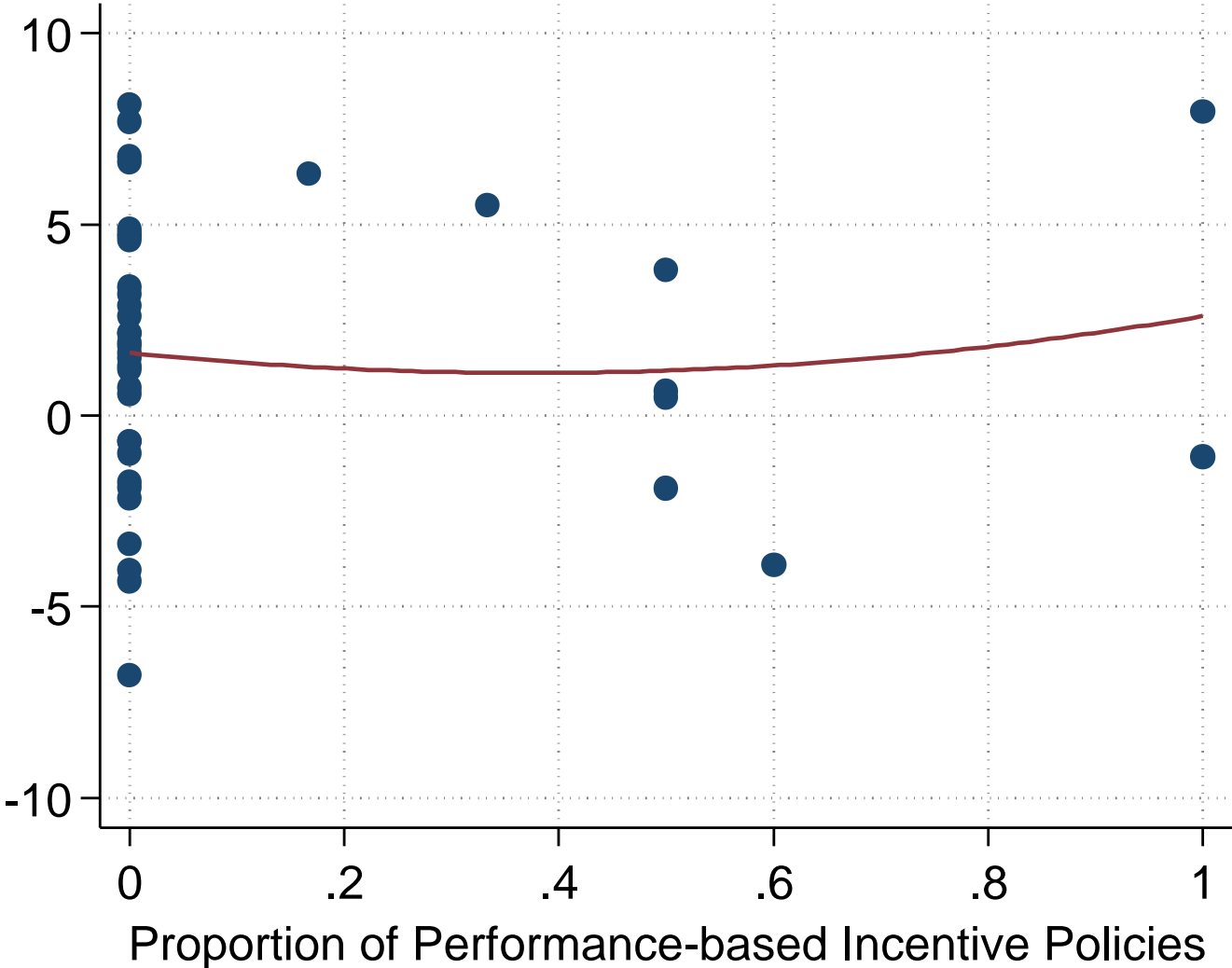
Number of policies is not correlated with national examination performance



Unsurprisingly, non-performance-based incentives are uncorrelated with national examination performance



But even proportion of performance-based incentives does not predict national examination performance



Three Takeaway Points

1. District create many education policies, some variation between districts.
2. 70% policies related to teachers; largest proportion on non-performance-based incentives. Comparatively little on training or performance-based incentives.
3. Number and type of policies are not correlated with learning outcomes
Even performance-based incentives

Thank You!

www.rise.smeru.or.id



MATHEMATICA
Policy Research