



**INDONESIA
DEVELOPMENT
FORUM 2018**
INSPIRE · IMAGINE · INNOVATE · INITIATE



KNOWLEDGE
SECTOR INITIATIVE



Pathways to Tackle Regional Disparities Across the Archipelago

Sub-Theme : Connecting the Archipelago





**INDONESIA
DEVELOPMENT
FORUM 2018**
INSPIRE · IMAGINE · INNOVATE · INITIATE



**KNOWLEDGE
SECTOR INITIATIVE**



Analyzing Port Connectivity in South-East Asia using Global Marine Vessel Automatic Identification System Data

Hafida Fahmiasari

Port Economist/Business Development

Royal HaskoningDHV





INDONESIA
DEVELOPMENT
FORUM 2018
INSPIRE · IMAGINE · INNOVATE · INITIATE

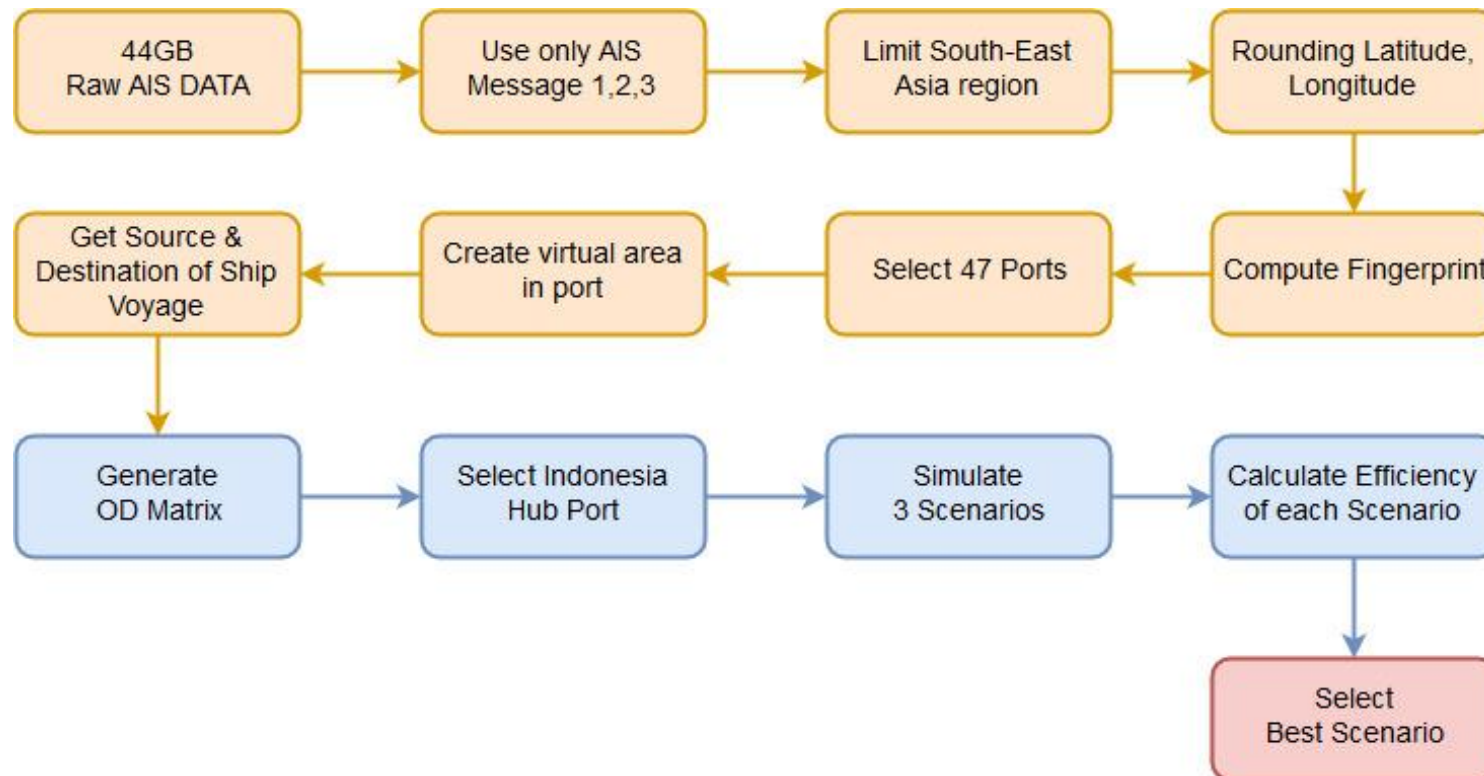


AIS (Global Marine Vessel Automatic Data)





Research Methodology



Betweenness Centrality

$$C_B(v) = \sum_{s,t \in V} \frac{\sigma(s,t|v)}{\sigma(s,t)}$$

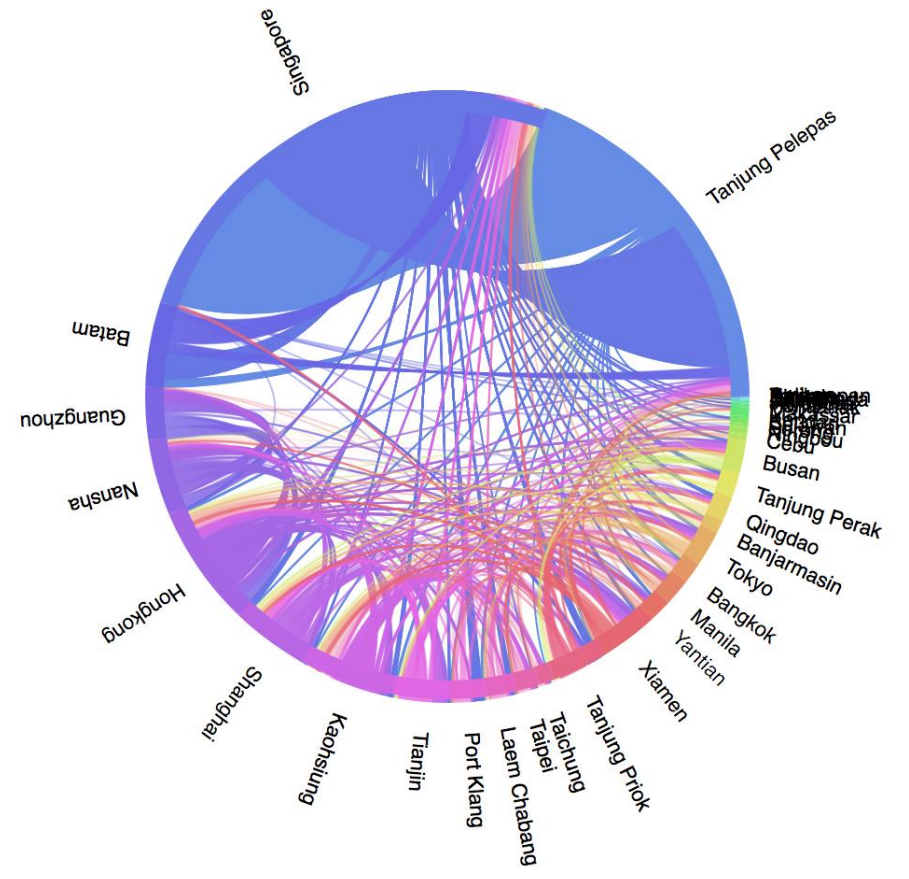
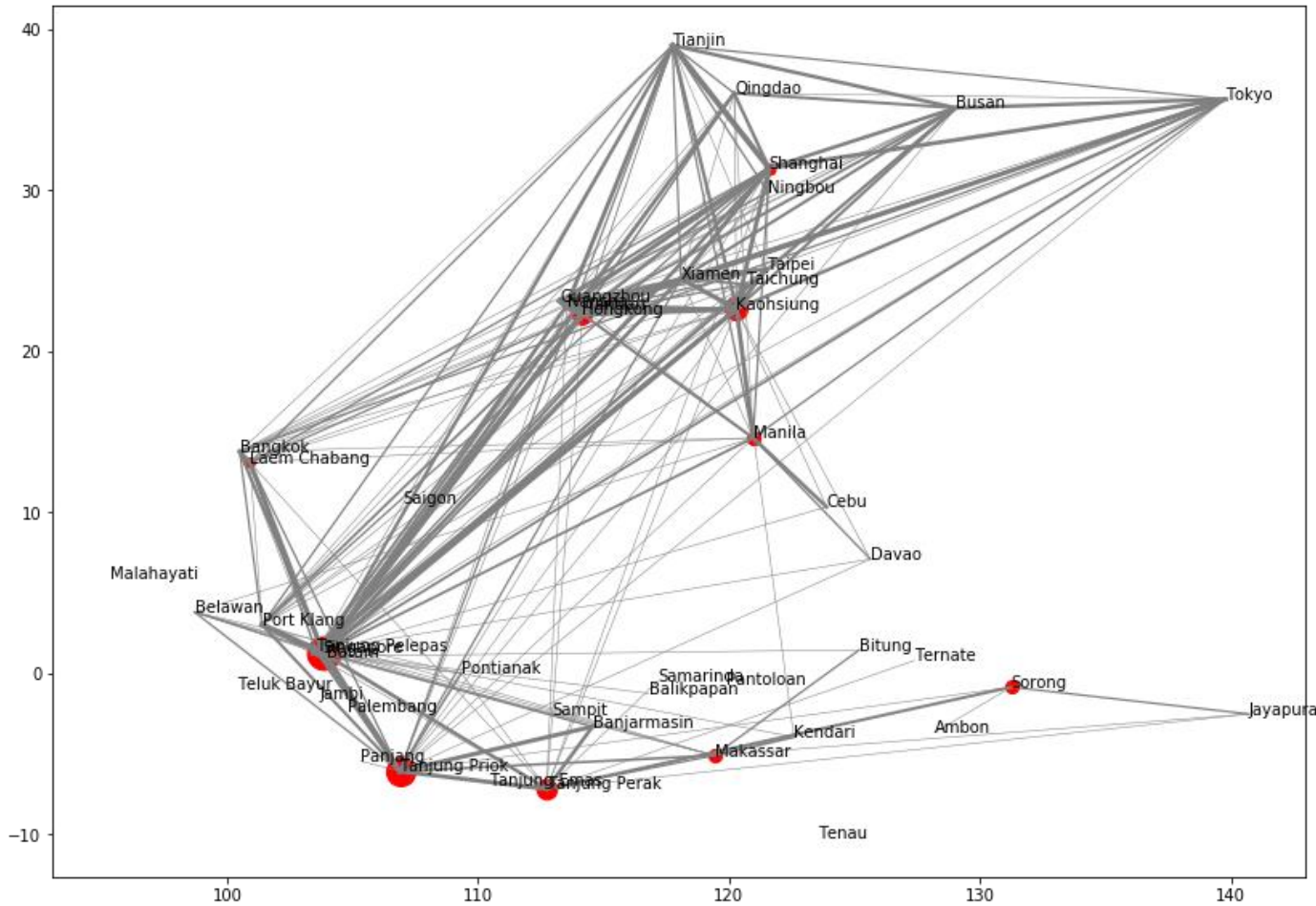
Network Efficiency

$$\varepsilon = \frac{\sum_{w \in W} \frac{d_w}{\lambda_w}}{n_w}$$



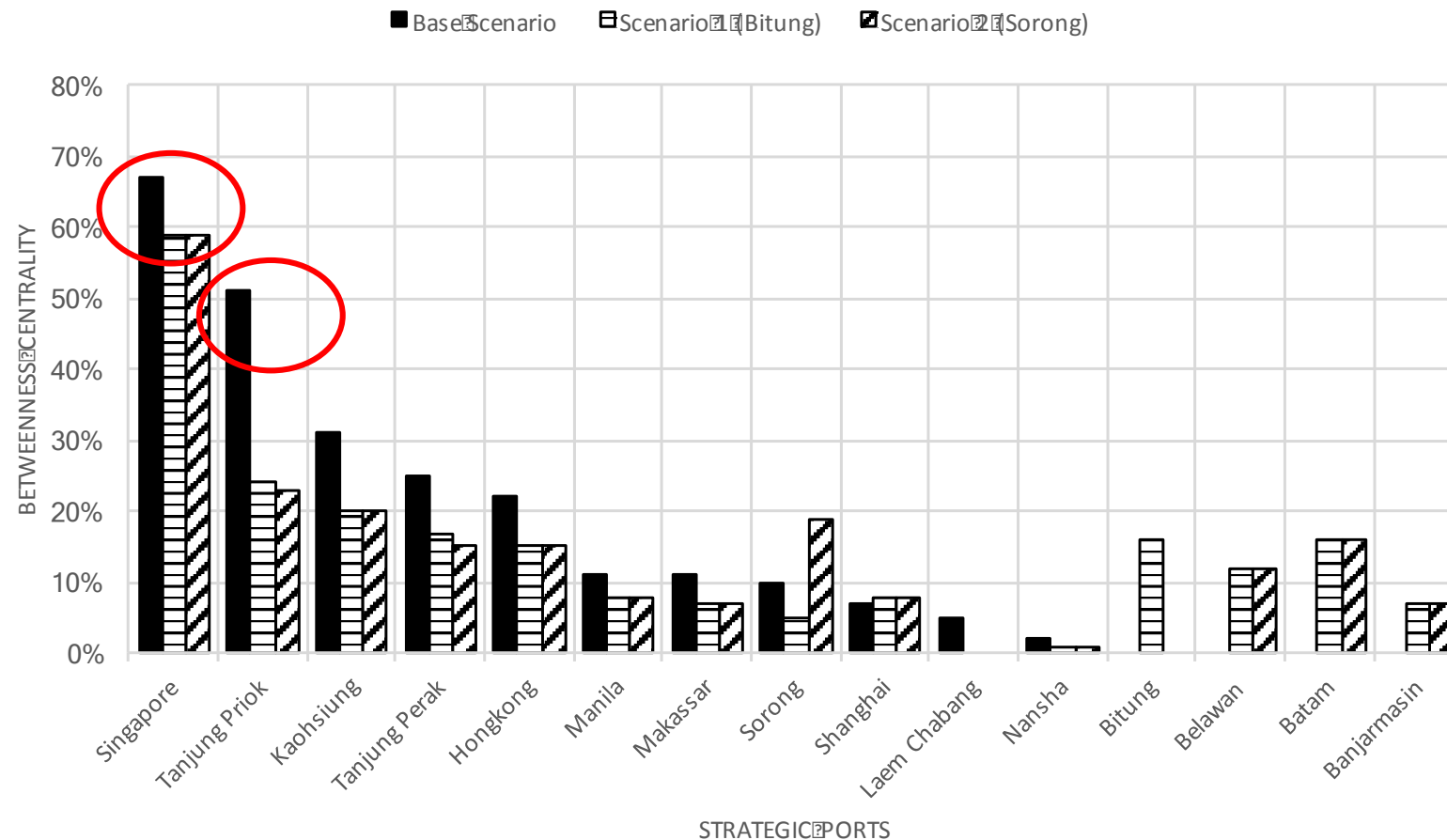


Data Analysis





Betweenness Centrality



Tol laut:

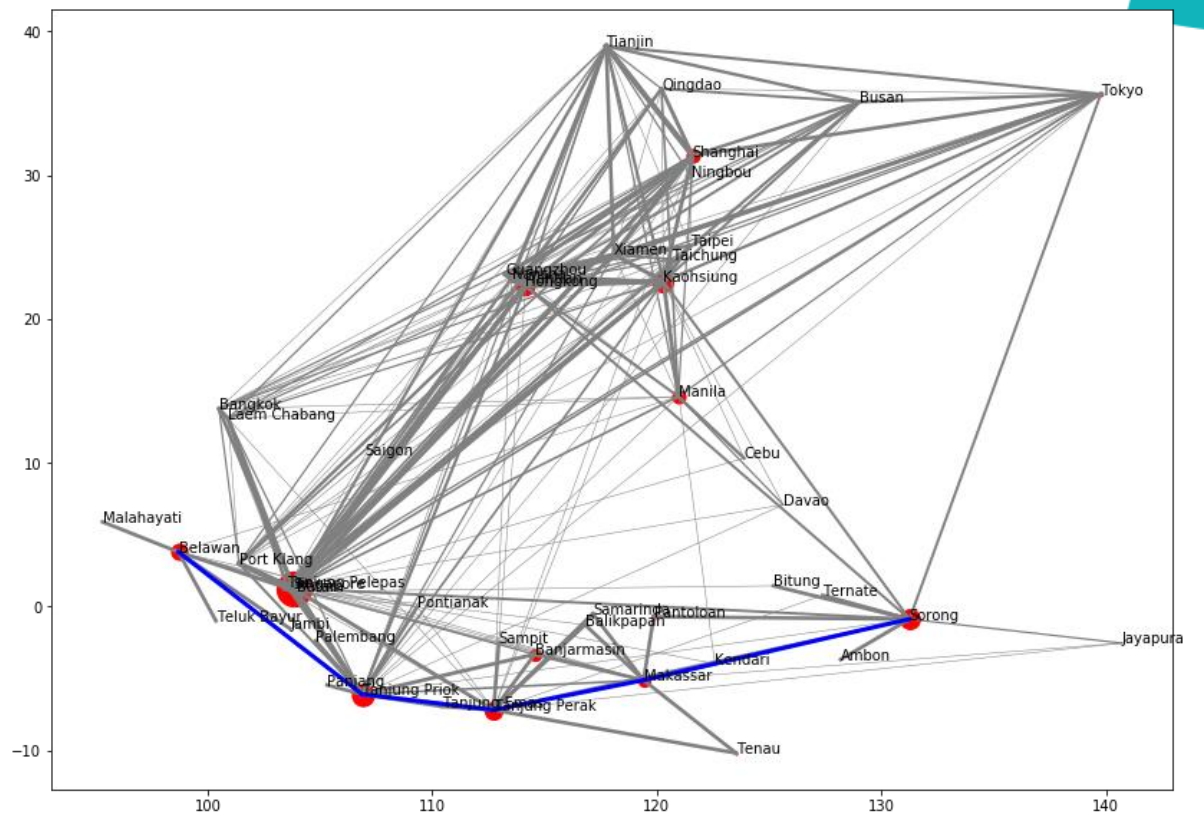
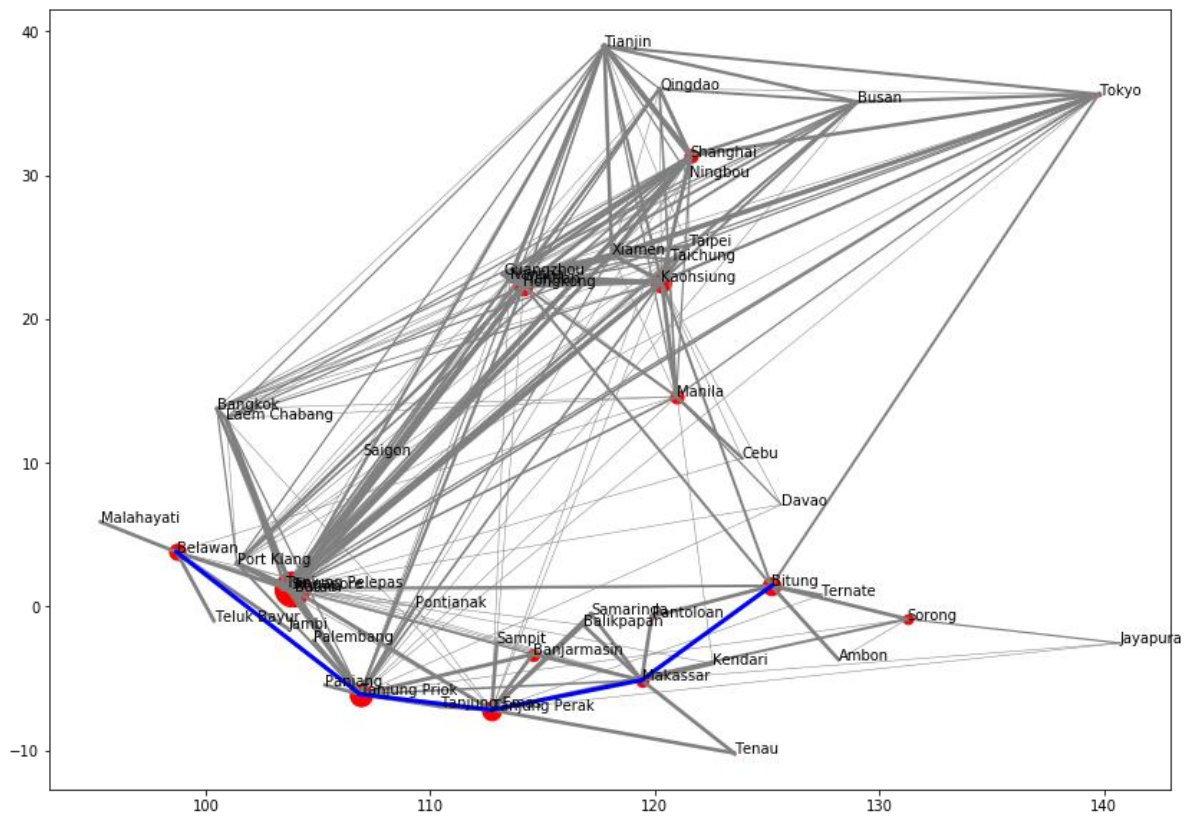
- Decreases dependency to Singapore (8%)
- Decreases dependency to Tanjung Priok (24%)





Network Efficiency Analysis

Bitung (3 trips/day) > Sorong (2.5 trips/day)





INDONESIA
DEVELOPMENT
FORUM 2018
INSPIRE · IMAGINE · INNOVATE · INITIATE



Jalesveva Jayamahe!

