



INDONESIA
DEVELOPMENT
FORUM

INSPIRE • IMAGINE • INNOVATE



KNOWLEDGE
SECTOR INITIATIVE



Indonesia Development Forum 2017

Fighting Inequality for Better Growth

Jakarta, 9-10 August 2017



INDONESIA
DEVELOPMENT
FORUM

INSPIRE • IMAGINE • INNOVATE



KNOWLEDGE
SECTOR INITIATIVE



EXPLORING THE HUMAN MENTAL MAP:
**ECONOMIC INEQUALITY
AND CORRUPTION**



KANTOR STAF PRESIDEN
REPUBLIK INDONESIA

EXPLORING THE HUMAN MENTAL MAP: ECONOMIC INEQUALITY AND CORRUPTION

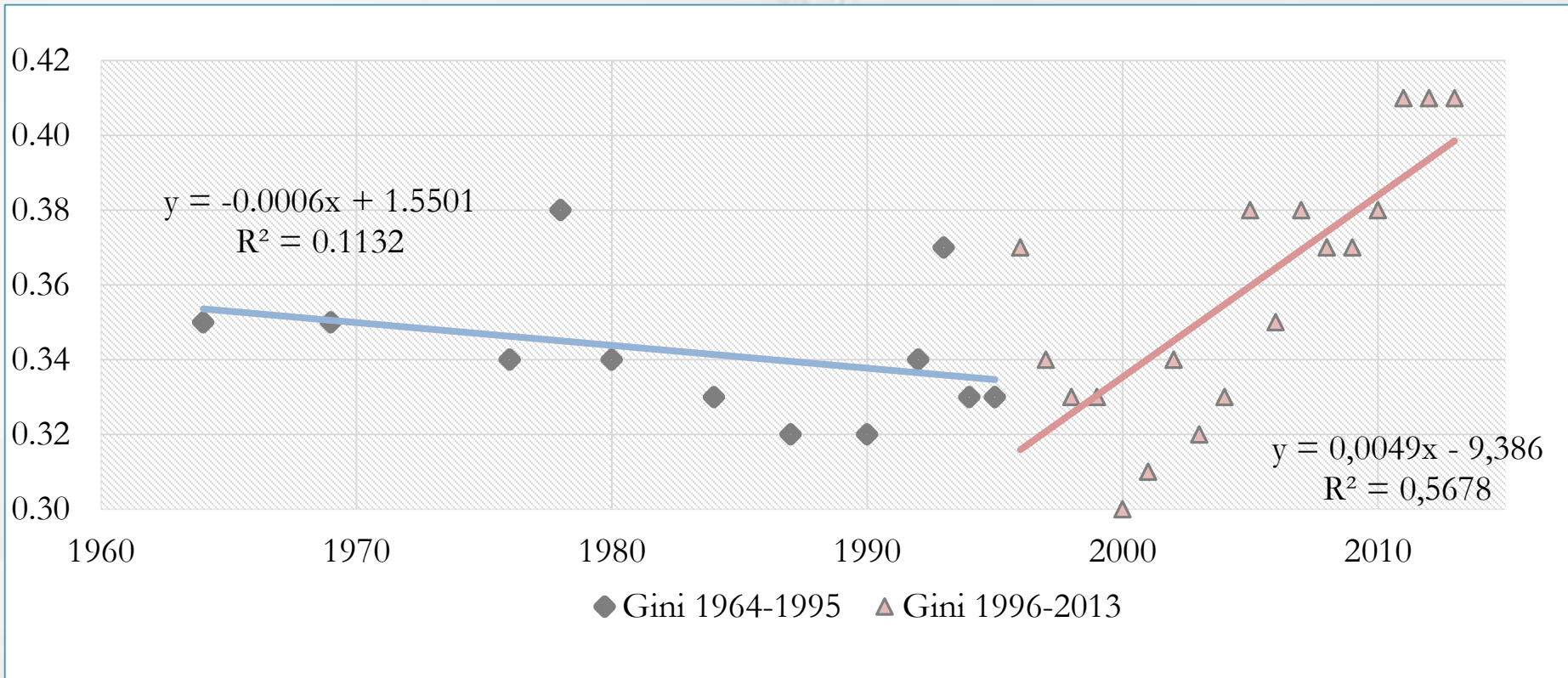
Author : Abraham Wirotomo (Kantor Staf Presiden)
abraham.wirotomo@ksp.go.id

Co-author : Putu Sanjiwacika Wibisana (Universitas Gadjah Mada)

Jakarta, 10 August 2017



BEFORE AND AFTER 1997 CRISIS



Economic inequality in Indonesia has been on the rise over the past 10 years. Despite having a relatively stable level of income inequality during the period from 1960 to 1990, in the aftermath of the 1997 economic crisis income inequality has exhibited a significantly positive trend.



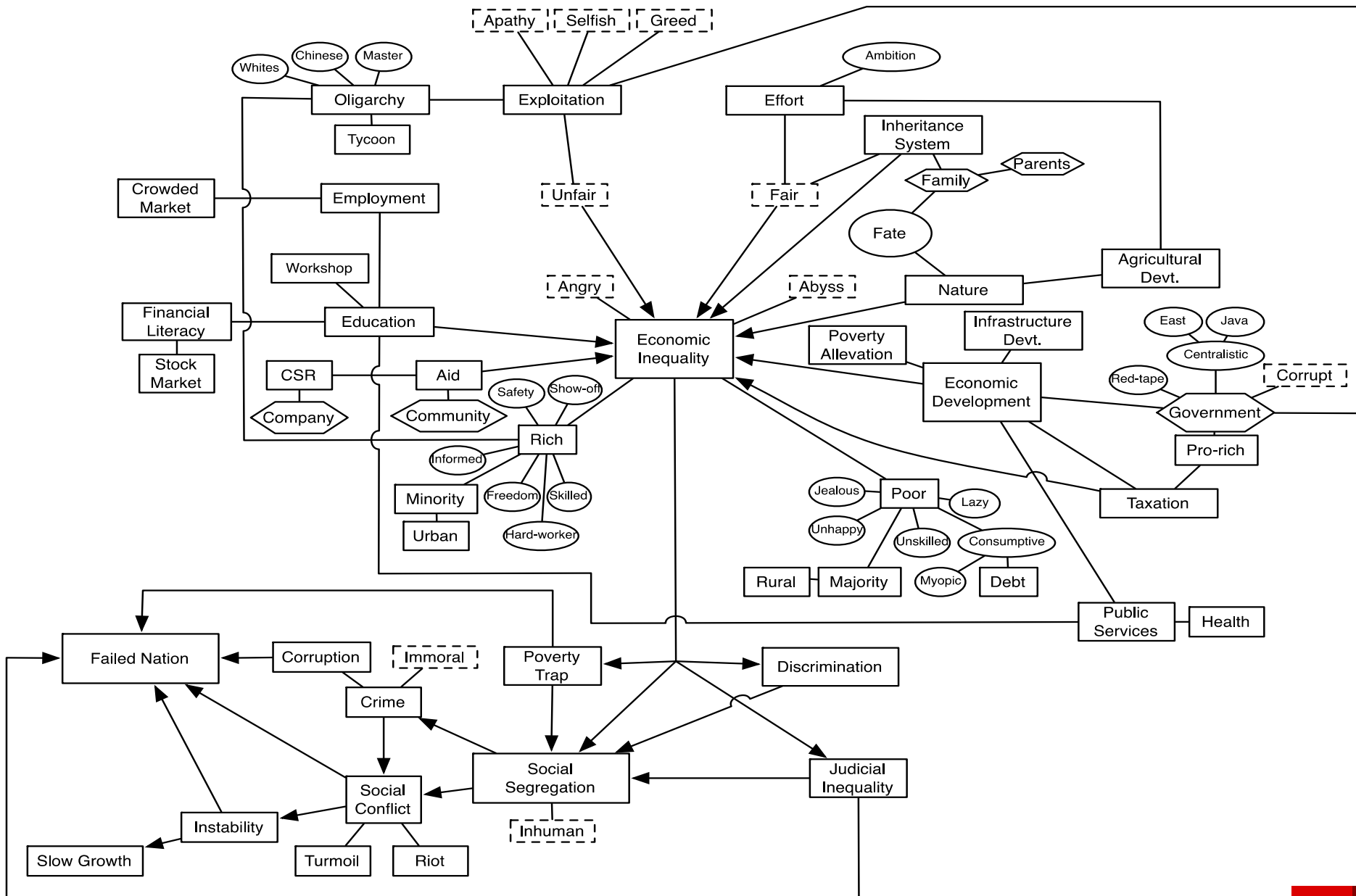
Ninety-five percent of thought, emotion, and learning occur in the unconscious mind--that is, without our awareness,

— *Gerald Zaltman* —

AZ QUOTES

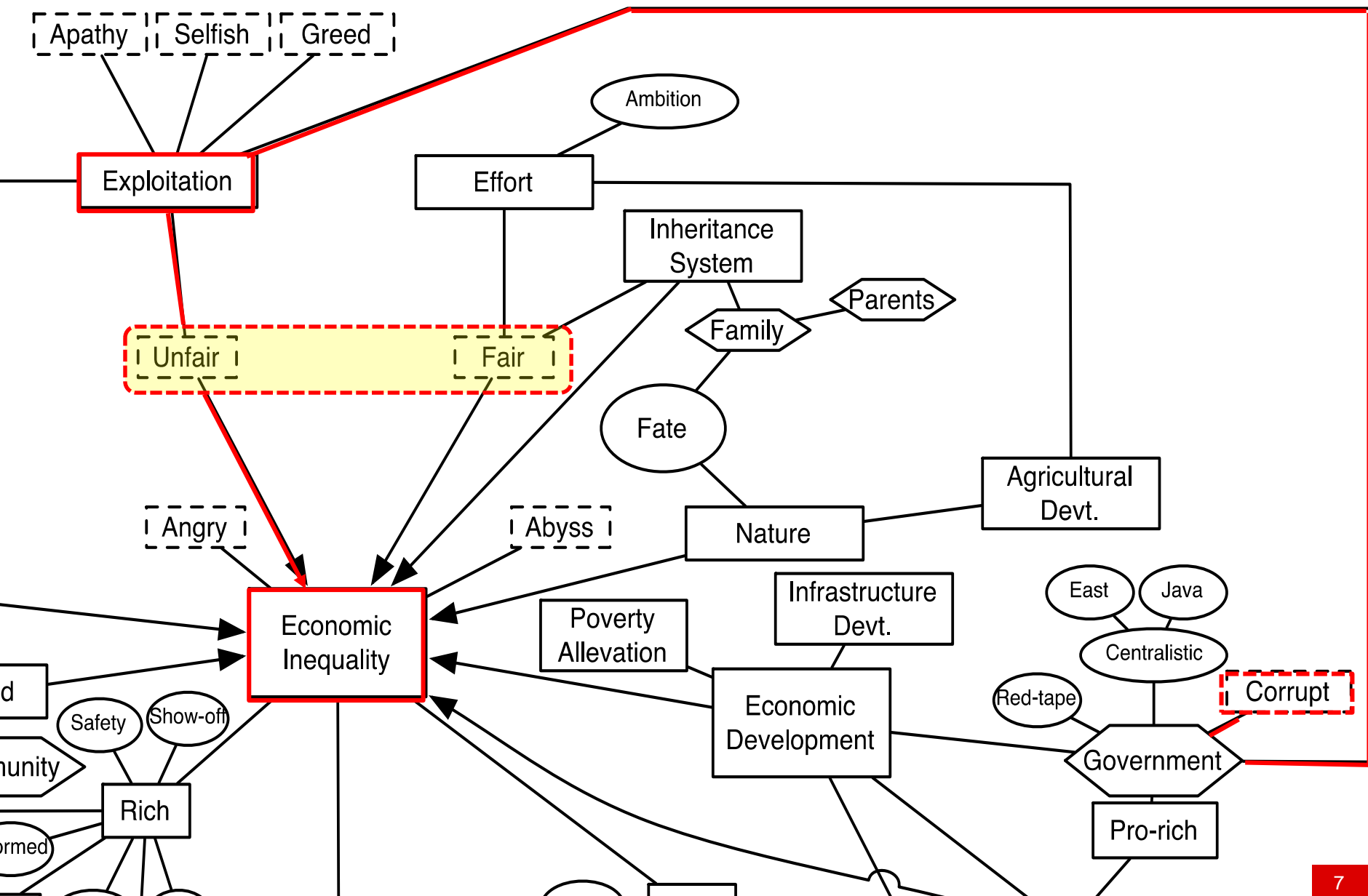


RESULT: MENTAL MAP





INEQUALITY AND CORRUPTION





TERIMA KASIH

Kantor Staf Presiden Republik Indonesia
Jl. Veteran No. 16 Jakarta Pusat
10110 Indonesia